

2007 / 2008

# ANNUAL REPORT



## PROJECT DELIVERY:

*Job #1*

**STa**

Solano Transportation Authority

... working for you!

## STA Board of Directors

Members of the Solano Transportation Authority (STA) Board of Directors are appointed by their local jurisdictions to serve as representatives. Each of the seven Solano cities and the County of Solano have one Board member and alternate who work together to address a wide array of transportation issues and priorities.

### 2007 Board



Pictured left to right: Jim Sperring, Harry Price, Mary Ann Courville, Steve Messina (Vice Chair), Anthony J. Intintoli, Jr. (Chair), Len Augustine, Pete Sanchez, Ed Woodruff



### 2008 Board

Pictured left to right: Len Augustine, Mary Ann Courville, Elizabeth Patterson, Ed Woodruff (Chair), Osby Davis, Pete Sanchez, Harry Price, Jim Sperring (Vice Chair).

#### 2007 Board Members

Anthony J. Intintoli, Jr., Chair  
Mayor, City of Vallejo

Steve Messina, Vice Chair  
Mayor, City of Benicia

Mary Ann Courville  
Mayor, City of Dixon

Harry Price  
Mayor, City of Fairfield

Ed Woodruff  
Mayor, City of Rio Vista

Pete Sanchez  
Mayor, City of Suisun City

Len Augustine  
Mayor, City of Vacaville

Jim Sperring  
Supervisor, District 3, Solano County

#### 2008 Board Members

Ed Woodruff, Chair  
Mayor, City of Rio Vista

Jim Sperring, Vice Chair  
Supervisor, District 3, Solano County

Elizabeth Patterson  
Mayor, City of Benicia

Mary Ann Courville  
Mayor, City of Dixon

Harry Price  
Mayor, City of Fairfield

Pete Sanchez  
Mayor, City of Suisun City

Len Augustine  
Mayor, City of Vacaville

Osby Davis  
Mayor, City of Vallejo

## Table of Contents

<b>STA's Commitment . . . . .</b>	<b>3</b>
<b>About Solano County . . . . .</b>	<b>4</b>
<b>Message from STA Board . . . . .</b>	<b>5</b>
<b>Advocacy . . . . .</b>	<b>6</b>
<b>Project Delivery . . . . .</b>	<b>9</b>
<b>Programs . . . . .</b>	<b>16</b>
<b>Planning for the Future . . . . .</b>	<b>25</b>
<b>2007 Highlights . . . . .</b>	<b>27</b>
<b>2008 Highlights . . . . .</b>	<b>28</b>
<b>Financials . . . . .</b>	<b>30</b>
<b>Committees . . . . .</b>	<b>32</b>
<b>Staff . . . . .</b>	<b>35</b>

## The STA Commitment

The Solano Transportation Authority (STA) was created under a Joint Powers Agreement in 1990 to serve as the Congestion Management Agency for Solano County. STA member agencies include the cities of Benicia, Dixon, Fairfield, Rio Vista, Suisun City, Vacaville and Vallejo, and Solano County. STA is responsible for implementing countywide transportation planning and coordination; delivering priority projects; programming federal, state and regional transportation funds; and managing the Solano Napa Commuter Information program and two transit services.

# About Solano County

## Population

The Association of Bay Area Governments has projected Solano County to have the largest percentage of population and job growth of any county in the Bay Area over the next 25 years. Its location between Sacramento and the Bay Area gives it strategic economic development importance for the region. Solano County's current population of about 427,000 is projected to increase to 488,000 by 2015 and 563,000 by 2030. The estimated 212,000 employed residents in 2009 will increase to about 300,000 by 2030.

## Employment

Solano County's growing economy represents a diverse mix of traditional and emerging industries. In recent years, many large biotechnology manufacturing, medical device, biotechnology research and development, and seed production firms have relocated to Solano County. The Solano Business Park in Fairfield is home to the Jelly Belly Candy Company, and the Benicia Industrial Park is home to the Valero Refinery. Hospitals and medical facilities have grown in number throughout the county, and Solano County is home to large employers such as Genentech, COPART, Novartis, Alza, and Six Flags Discovery Kingdom in Vallejo. Travis Air Force Base, home to the 60<sup>th</sup> Air Mobility Wing, is the largest employer in Solano County, contributing more than \$1 billion annually to the local economy.

## Solano Traffic

Solano County is dissected by I-80 (connecting the Bay Area to Sacramento), I-680 (connecting Contra Costa and Santa Clara counties to Solano) and State Route 12 (connecting San Joaquin County and the Napa Valley). New residential and commercial developments throughout the Bay Area have increased the stress on current transportation infrastructure. Many Solano residents continue to travel to jobs in other counties, making commute traffic and safety on I-80, I-680, and State Route 12 an increasingly critical transportation problem.



I-80 Pavement



*"Solano County is outpacing California and the Bay Area in several job growth categories. We have a track record of successfully working together on major issues such as overcoming congestion with new federal, state and local dollars for transportation infrastructure. We cannot underestimate the importance of our 'collaborative capital' to growing jobs."*



**Mike Ammann, President  
Solano Economic Development  
Corporation**





*Solano Transportation Authority*

One Harbor Center, Suite 130 ■ Suisun City, CA ■ 94585 ■ (707) 424-6075 ■ Fax (707) 424-6074 ■ [www.solanolinks.com](http://www.solanolinks.com)

*Members:*

Benicia  
Dixon  
Fairfield  
Rio Vista  
Solano County  
Suisun City  
Vacaville  
Vallejo

***The Solano Transportation Authority's Mission is to improve the quality of life in Solano County by delivering transportation projects to ensure mobility, travel safety, and economic vitality.***

**To: Solano County Residents, the Business Community  
and our Partner Agencies and Representatives**

Transportation improvements in Solano County provide a better quality of life for our residents, improve movement of goods and services for local businesses, and create local jobs that help vitalize and build the local economy.

STA achieved many successes in 2007 which laid the groundwork for additional successes in 2008, several of which focused on traffic safety. STA spearheaded a regional partnership effort to improve traffic safety and mobility on State Route (SR) 12 resulting in legislation establishing a double-line zone on SR 12 from I-80 to I-5. Fatalities and accidents on SR 12 were significantly reduced and public awareness increased by additional law enforcement, roadway engineering, printed fact sheets and media spots, and memorializing a section of SR 12.

The new Safe Routes to School Plan was developed in partnership with school districts and local communities in Solano County, which brought together many parents, teachers, city officials and community members to create local strategies for the safety of their students. STA also secured construction funds for much needed highway and arterial improvements.

STA is dedicated to addressing Solano County's most urgent transportation needs by providing funding for highway and safety improvements, improving and expanding transit options, and supporting local projects such as road maintenance and bicycle projects.

Despite state and federal cutbacks in transportation funding, STA has been able to ensure continued progress on our top priority projects, such as the I-80/I-680/SR 12 Interchange, the Jepson Parkway and SR 12 safety projects. STA is working with the California Department of Transportation (Caltrans), Federal Highway Administration (FHWA), Federal Transit Administration (FTA), the Metropolitan Transportation Commission (MTC), the California Transportation Commission (CTC), and our state and federal representatives to obtain the maximum amount of regional, state and federal funds for Solano County's transportation projects.

We look forward to future successes as we collaborate with our partners to bring critically needed transportation improvements to Solano County residents.

Sincerely

Anthony J. Intintoli, 2007 Chair  
Mayor, City of Vallejo

Eddie Woodruff, 2008 Chair  
Mayor, City of Rio Vista

## Advocacy

### SR 12 Safety Efforts

State Route (SR) 12, between Suisun City and Rio Vista, has been a particularly dangerous roadway. Accident rates, including fatalities, are more than one and a half times the statewide average. At the end of 2006, the STA Board initiated an effort to develop strategies and improvements on SR 12 from I-80 to I-5. This area covers 3 counties, 3 regional government jurisdictions, 3 Caltrans districts, multiple state Senate and Assembly districts, and involves state and federal agencies dealing with the Sacramento/San Joaquin Delta.

In January of 2007, the STA Board took decisive action to accelerate safety efforts for the road, with a four-pronged approach: Enforcement, Legislation, Education and Engineering. This approach was designed to have an immediate, short term impact on deadly driving through enforcement and education; and to allow longer-term solutions provided by education and engineering to produce safer conditions of a more permanent nature.

The STA coordinated the following steps that were implemented:

- Formation of the STA SR 12 Steering Committee to address safety improvements, funding options and increasing public awareness on SR 12.

- Preparation of an analysis of accidents on SR 12, with an emphasis on the nature of fatality and injury accidents. This information has helped guide the current enforcement and proposed engineering projects, so that resources are expended where they will have the greatest benefit.

#### Enforcement:

- Promotion and publicity for increased traffic enforcement on SR 12 by the California Highway Patrol (CHP) and Police Departments of Fairfield, Rio Vista, Suisun City.
- Assistance to CHP in applying for and receiving an Office of Traffic Safety (OTS) corridor safety grant for SR 12 between I-80 in Solano County and I-5 in San Joaquin County. STA continues to collaborate with CHP and OTS to incorporate existing STA public outreach efforts and logos into the multi-agency safety campaign.

#### Legislation:

- STA co-sponsorship of a bill (ACR 7) authored by Assemblymember Lois Wolk designating a portion of SR 12 as the "Officer David Frank Lamoree Memorial Highway," in memory of a Rio Vista police officer killed in an accident on SR 12.
- STA sponsorship of AB 112 (Wolk), to establish criteria for double fine zones for roadways and to designate SR 12 as such. STA worked with several legislators to pass the bill. SR 12 was designated as a double fine zone from I-80 in Solano County to I-5 in San Joaquin County.



OTS Press Conference in January 2008 Announcing Grant for Increased Enforcement of SR 12

### Education:

- Public briefings notifying the public and the media about Caltrans safety improvements, CHP enforcement efforts, corridor safety issues, and SR 12 legislation. Two press conferences featured Caltrans Director Will Kempton as the main speaker.



*Officer Lamoree Memorial Highway Sign, Rio Vista*

- Design of new public awareness elements for SR 12 safety efforts using the branded tagline "Drive to Stay Alive" from the previous campaign.
- Development and publication of a periodic newsletter titled "SR 12 STATUS," highlighting safety issues and safe driving tips for SR 12. Two editions were published and distributed in 2007.
- STA coordination with the City of Fairfield for the production of a cable television talk show hosted by the Mayor of Fairfield, one of the largest cities on the SR 12 corridor, regarding SR 12 safety issues and improvements.

### Engineering:

- Partnership with Caltrans to accelerate the installation of safety improvements on SR 12, including temporary median barriers, centerline and shoulder rumble strips, changeable message signs and radar feedback signs. Caltrans programmed \$46 million in projects to improve safety on SR 12.



*SR 12 Temporary Median Barrier*

## Proposition 1B

Proposition 1B was approved by California and Solano County voters in 2006 to set aside more than \$19 billion during the next 10 years to fund traffic improvements statewide.

In February 2007, the California Transportation Commission (CTC) awarded \$56 million to the I-80 High Occupancy Vehicle Lanes (HOV) Project and \$74 million to the State Route (SR) 12 Jameson Canyon Project from the Corridor Mobility Improvement Account (CMIA) of Proposition 1B. Both projects are now fully funded.

In December 2007, the STA submitted the I-80 Eastbound Cordelia Truck Scales Relocation Project for funding from the Proposition 1B Trade Corridor Improvement Fund (TCIF). The Project secured nearly \$50 million in TCIF funds to be matched with \$50 million in Bridge Tolls, and is now fully funded.



*Traffic on I-80/SR 12*



## TEA-21 Reauthorization (SAFETEA-LU)

The Transportation Equity Act for the 21st Century (TEA-21) was enacted in 1998 to ensure a strong and integrated national transportation and transit system, improve the environment and expand employment opportunities. The U.S. Department of Transportation selects projects for long-term funding based on a stringent set of criteria, including local financing. STA has been successful in getting State funds to match or supplement federal earmark funds, and local agencies have also committed significant local funds.

In August 2005, Congressional bill HR3, the Safe, Accountable, Flexible, Efficient Transportation Equity Act: A Legacy for Users (SAFETEA-LU) was signed into law to carry over the long-term reauthorization measure. The measure provides \$286.5 billion through FY 2008–09 for highway, mass transit and road safety programs, and ensures that California and other states receive at least 92 percent of the money they contribute to the Highway Trust Fund by 2008.

Thanks to the collective efforts of Congress members Ellen Tauscher, George Miller and Dan Lungren, the bill provides earmarks for more than \$34 million for key Solano County regional transportation projects, which is the largest amount of funds Solano County has received from a federal authorization bill. Solano ranked 16th out of 58 California counties in the amount of SAFETEA funds received.



Travis AFB North Gate Access

The projects receiving earmarks were:

- I-80/I-680/SR 12 Interchange (\$17.4M)
- SR 12 Widening through Jameson Canyon (\$6.4 M)
- Jepson Parkway/Travis AFB Access Improvements (\$3.2M)
- I-80 HOV Lanes and Interchange Construction in Vallejo (\$2.8M)
- Cordelia Pedestrian/Bicycle Corridors Upgrade (\$2.4M)
- Rio Vista Bridge Realignment Study and Street Sign Safety (\$560,000)



Vallejo Ferry Maintenance Facility

## Federal Appropriations

STA continues to press forward to provide federal delegates with information on priority projects in need of critical federal dollars.

STA submitted requests for funding in 2007 for the 2008 Federal year and received the following earmarks:

- Vallejo Ferry Maintenance Facility (\$1.0M)
- Fairfield/Vacaville Intermodal Station (\$0.2M)

STA submitted requests for funding in 2008 for the 2009 Federal year and received the following earmarks:

- Alternative Fuel Bus Replacement (\$0.760M)
- Vacaville Intermodal Station (\$0.475M)
- Fairfield Transportation Center (\$0.475M)  
(requested by City of Fairfield)

A total of **\$45.8 million** in federal funds has been obtained as a direct result of STA advocacy efforts with Washington, D.C. since 1998.



## Project Delivery

### New Benicia-Martinez Bridge

Caltrans completed the new northbound span of the Benicia-Martinez Bridge opened to traffic on August 25, 2007 and is named in honor of Congressman George Miller III. The existing span will be converted to carry four lanes of southbound traffic as well as a new bicycle and pedestrian pathway by the year 2009.

The new bridge has five northbound lanes, a new 9-lane toll plaza with one carpool bypass and two FasTrak open road tolling express lanes were constructed. The bridge toll plaza contains Northern California's first open road tolling system allowing FasTrak customers to travel through the toll plaza at 55 mph.

In addition, a new interchange at I-680/I-780 has been constructed on the Solano County side. The project is funded by Regional Measures 1 and 2. The existing span will be converted to carry four lanes of southbound traffic as well as a new bicycle and pedestrian pathway by the year 2009.



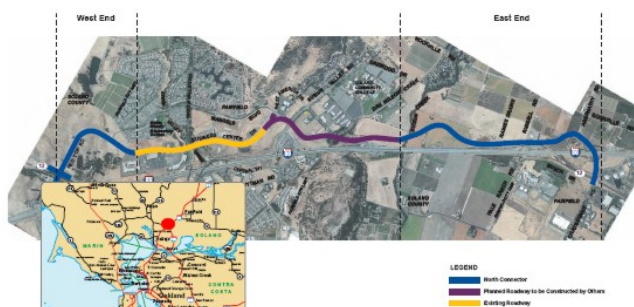
Above: New Benicia-Martinez Bridge Toll Plaza

Below: New Benicia-Martinez Bridge

## North Connector

The North Connector project is a parallel arterial road to I-80 which will link the east and west sections of State Route (SR) 12, providing local traffic an alternative to using I-80. The project is a five-mile arterial (including 1.4 miles of existing roadway) connection in Fairfield north of I-80 between SR 12 West and SR 12 East.

The project will build approximately four miles of new roadway from Abernathy Road to Suisun Valley Road, where it will connect with the existing Business Center Drive and then extend Business Center Drive to Red Top Road at SR 12 West. This project will address existing and future traffic congestion on local streets and on I-80 in Solano County and Fairfield. In addition, the project will close gaps in the local circulation network.



The project will be built in segments, beginning with the east segment. When funding is available, the west segment will be constructed in coordination with the I-80/I-680/SR 12 Interchange project. The City of Fairfield will build the central segment in conjunction with a private developer. The Project is funded with Traffic Congestion Relief Program, Regional Measure 2 (bridge tolls), and local city and county funds.

North Connector Project Schedule	
Environmental	May 2008
Design	March 2009
Right-of-Way	June 2009
Construction	June 2009

## I-80 High Occupancy Vehicle (HOV) Lanes

This project will construct the first High Occupancy Vehicle (HOV) Lanes in Solano County on I-80 between Red Top Road and Air Base Parkway. The new 8.7 miles of additional east and west-bound lanes will be constructed in the median. The Project is funded with Proposition 1B Corridor Mobility Improvement Account funds, a Federal earmark, and Regional Measure 2 funds.

Studies show that 25% of vehicles in Solano County carry at least two passengers. The new lanes are expected to decrease the morning commute vehicle hours of delay by 39% for HOVs and by 21% for all other vehicles. The new lanes are expected to decrease the afternoon commute vehicle hours of delay by 47% for HOVs and by 28% for all other vehicles. The cost of the I-80 HOV Lanes project is estimated at \$50 million. The new lanes are under construction and will be opened by fall 2009.

I-80 HOV Lanes Project Schedule	
Environmental	April 2007
Design	December 2007
Right-of-Way	N/A
Construction	June 2008



*I-80 HOV Groundbreaking, June 2008*

## Jepson Parkway

The 12-mile Jepson Parkway project is an I-80 reliever route that will improve intra-county mobility for Solano County residents. The project upgrades a series of narrow local roads to provide a north-south travel route for local residents as an alternative to I-80. The project proposes a continuous four-lane roadway from the SR 12/ Walters Road intersection in Suisun City to the I-80/Leisure Town Road interchange in Vacaville. The project also includes safety improvements, such as the provision for medians, traffic signals, shoulders, and separate bike lanes.

Jepson Parkway is also a gateway to Travis Air Force Base in Fairfield. This project will provide local residents an alternative route to access this major Solano County employer.



*Leisuretown Road Interchange, Vacaville*



*Jepson Parkway—Walters Road Widening, Suisun City*



The Jepson Parkway Environmental Impact Report is scheduled for review in Spring 2009. The overall estimated construction cost of the remaining segments is \$186 million. The project will be built in phases in partnership with the City of Fairfield, the City of Suisun City, Solano County and the City of Vacaville. Over \$30 million of State Transportation Improvement Program (STIP) funds have been programmed towards this project.

Jepson Parkway Project Schedule	
Environmental	March 2009
Design	Spring 2010
Right-of-Way	Fall/Winter 2010
Construction	Fall/Winter 2010

## I-80/I-680/SR 12 Interchange

The I-80/I-680/SR 12 Interchange project encompasses an approximate four-mile section of freeway and highways containing nine separate interchanges. Traffic volumes are projected to grow by approximately 2% per year to 2035, the design year, bringing the total daily volume passing through the corridor to 270,000 vehicles.

The Interchange is important to local, commuter and regional travel. It also includes a pair of State-owned and operated regional truck scale facilities. The placement of these truck scales within the Interchange complex is ideal for monitoring and enforcing truck weight and safety requirements because it provides an opportunity to monitor truck traffic on three routes (I-80, I-680, and SR 12) with a single set of scales. The volume of trucks in the corridor has increased dramatically since the 1960s. Based on a 2005 study, truck volume from 2005 to 2025 is projected to increase by 70%; and from 2005 to 2040 to increase by 115%.

Two preferred build alternatives have been identified to carry forward for study in the Environmental Document. Both of these alternatives would improve operations by providing improved roadway geometrics on the mainline and at interchanges. Construction of the improvements identified in the

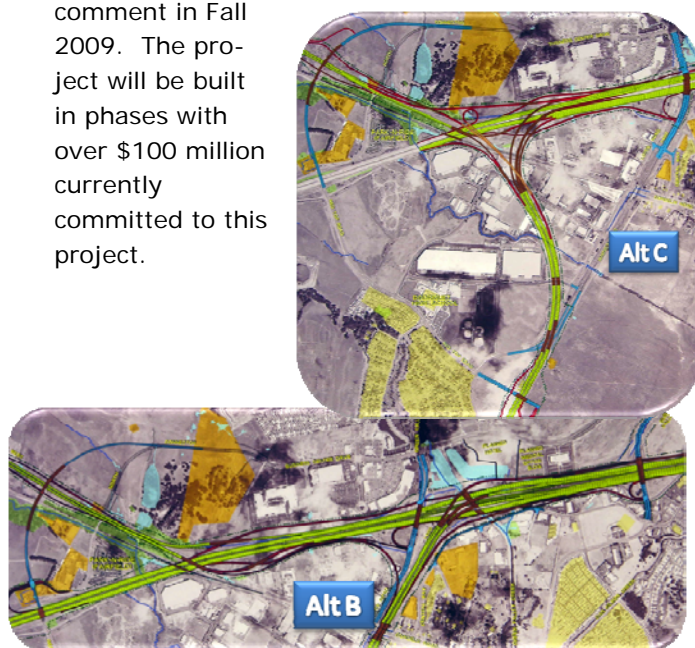


*I-80/I-680/SR 12 Interchange Complex*

Environmental Document will be completed as funding is made available. The full project is estimated to cost over \$1 billion. The draft environmental document will be released for public

I-80/I-680/SR 12 Interchange Project Schedule	
Environmental	Spring 2010
Design	Fall/Winter 2010
Right-of-Way	Fall 2011
Construction	Fall/Winter 2012

comment in Fall 2009. The project will be built in phases with over \$100 million currently committed to this project.



*I-80/I-680/SR 12 Interchange Proposed Design Alternatives*

## I-80 Cordelia Truck Scales

The Cordelia Truck Scales significantly contribute to the congestion on I-80 due to the large number of trucks exiting and entering I-80 and the close proximity of the scales to several interchanges, including SR 12 East, Suisun Valley Road, I-680, Green Valley Road and SR 12 West. In addition, the Cordelia Truck Scales, which were constructed in 1958, are seriously undersized and unable to process the existing truck volumes let alone the future projected truck volumes. The new scales will be able to process up to 900 trucks per hour, compared to the current processing rate of 400 trucks per hour.

The project would rebuild and relocate the I-80 Eastbound Cordelia Truck Scales Facility, build a 4-lane bridge across Suisun Creek, and construct braided ramps from the new truck scales facility to EB I-80 and EB SR 12 ramps. Funding for the Project is approximately \$50 million from Proposition 1B Trade Corridor Improvement Fund (TCIF) and approximately \$50 million of matching funds from Bridge Tolls.

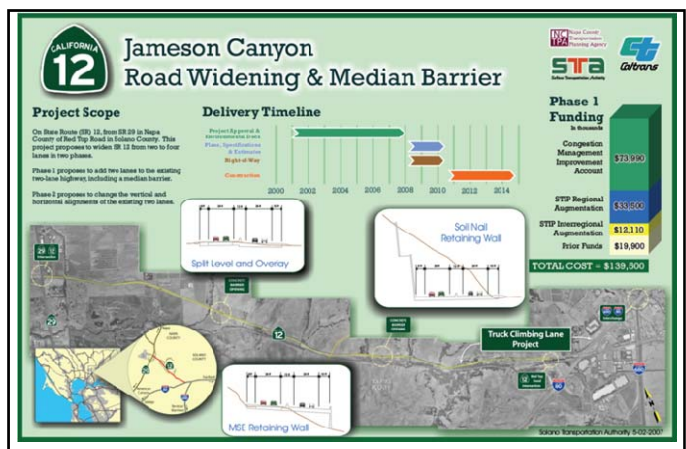
I-80 EB Cordelia Truck Scales Project Schedule	
Environmental	July 2009
Design	July 2010
Right-of-Way	Spring 2011
Ready to List	Spring 2011
Construction	Summer 2011



Rendering of New Truck Scale Facility

## State Route (SR) 12 — Jameson Canyon

Phase 1 of the SR 12 Jameson Canyon improvement project will widen approximately six miles of SR 12 from two to four lanes and construct a concrete median barrier. The project will bring the roadway up to current highway standards and help improve service levels on SR 12 between I-80 in Solano County and SR 29 in Napa County.



The \$139 million project is fully funded with federal, state and local funds, including \$74 million from the Proposition 1B Corridor Mobility Improvement Account, \$49 million from the State Transportation Improvement Program (STIP), \$7 million from the Traffic Congestion Relief Program, and \$9 million in federal funds. The STA, in partnership with Caltrans and the Napa County Transportation and Planning Authority, is working to deliver Phase 1 of the Jameson Canyon project. The STA is taking the lead on the design of this Phase 1 Project.

SR 12 - Jameson Canyon Project Schedule	
Environmental	January 2008
Design	December 2009
Right-of-Way	Fall/Winter 2010
Construction	Fall/Winter 2010





Vallejo Baylink Ferry

## Vallejo Intermodal Station

The Vallejo Intermodal Station will be the primary ferry/transit terminal in the North Bay, providing congestion-free transit to 15,000 daily riders. The Baylink Ferry is the most successful ferry service in the Bay Area—with three high-speed ferries in service—and is a vital link between San Francisco and Solano County. The new station will act as a catalyst for attracting private-sector investment in Vallejo's downtown and along the waterfront. Surrounding land uses are planned to transition to residential and "live work space," small retail offices, restaurants, open space and a renewed and dynamic downtown Vallejo waterfront.

The project will provide up to 1,800 off-street parking spaces, new local and regional bus transfer facilities, roadway access improvements, and new bicycle/pedestrian connections between downtown Vallejo, the intermodal station and the waterfront area. Regional express buses from this location will serve Napa Valley, Benicia, key BART stations, and locations along I-80 east to Fairfield.



Baylink Ferry Maintenance Facility Rendering

STA and the City of Vallejo have secured \$54.9 million in funding. The project, to be built in segments, is estimated to cost \$99 million. The City of Vallejo will build this project in phases, with the first phase beginning construction in Summer 2009.

Vallejo Intermodal Station Project Schedule	
Environmental	April 2007
Design	July 2009
Right-of-Way	Fall/Winter 2010
Construction	Summer 2009, Phase 1



Baylink Ferry Passengers

## Fairfield/Vacaville Train Station

This transit-oriented development will provide automobile, bus, carpool, bicycle and pedestrian access to Capitol Corridor train service. The station and related track improvements are key to meeting ridership requirements to allow Capitol Corridor to expand service beyond the current 16 intercity trains a day. Trains will carry Fairfield/Vacaville commuters to points along the Capitol Corridor, including the increasingly-popular downtown Sacramento station. The station will also provide access for members of the military, civilian employees and retired members of the military traveling to Travis Air Force Base, the David Grant Medical Center, and major employment centers in Fairfield and Vacaville.

The Fairfield/Vacaville Train Station project will include a stop for Capitol Corridor passenger trains, high-density residential development and supporting commercial uses. The station will be located in Fairfield at the intersection of Vanden Road and Peabody Road (a portion of the Jepson Parkway), a location also convenient to Vacaville train riders.

More than \$33 million in local, regional, State and federal funds have been secured to construct the initial station and track improvements. The project schedule calls for the station to be operating in 2013. STA continues to partner with the City of Fairfield for the development of plans and funding for the Fairfield/Vacaville Train Station. Fairfield is the lead agency for the delivery of this project.

### Fairfield/Vacaville Train Station Project Schedule

Environmental	August 2009
Design	December 2011
Right-of-Way	December 2010
Construction	November 2013



Capitol Corridor Train



Fairfield/Vacaville Train Station Drawing and Site Plan

## Vacaville Intermodal Station, Phase 1

The Vacaville Intermodal Station is located near Interstate 80 in the center of Vacaville. The facility will serve intercity and local bus routes, eventually have parking for 600 cars, and will be linked to the City's bicycle/pedestrian trail system. The project site is located within walking distance of the City's cultural center, major shopping areas, and hundreds of single family homes and apartment units. The overall project will be constructed in two phases. Phase 1 will provide ten bus bays as well as 200 automobile parking spaces in a surface lot. Phase 2 of this project will construct a 400-space parking garage, and is planned to also have retail space.

The total cost of Phase 1 of the project is estimated to be \$12.1 million, and Phase 2 is an additional \$17 million. Phase 1 of the project is fully funded; Phase 2 is unfunded. The City of Vacaville completed state environmental clearance for the project in late 2008, acquired the land, and is preparing construction documents.

Vacaville Intermodal Stn. Ph. 1 Project Schedule	
Environmental	December 2008
Design	July 2009
Right-of-Way	January 2009
Construction	November 2009



*Vacaville CityCoach*

## Dixon Train Station

The City of Dixon used money from a State Transportation Improvement Program (STIP) grant provided by the STA to develop preliminary design and engineering documents for the Dixon Train Station pedestrian access at "B" Street. This will provide both direct access to the passenger loading/unloading platform, and a safe underground passage for pedestrians to cross from one side of the tracks to the other.

The City of Dixon has completed 50% design plans for the "B" Street undercrossing. The City has also adopted a citywide Rail Safety plan, in order to establish a series of steps to improve safety and reduce congestion at rail crossings throughout Dixon. The first step in this program is to construct a grade-separated rail crossing at Parkway Boulevard in southwest Dixon. This project will then allow other projects to proceed, such as the "A" Street underpass.

Parkway Blvd Overcrossing Project Schedule	
Environmental	August 2009
Design	2009
Right-of-Way	2009
Construction	Spring 2010



*2006 Opening of the Dixon Train Station*



## Programs

### Safe Routes to School

The STA began the development of its Safe Routes to School (SR2S) Program in 2005, in response to , student travel safety concerns, traffic congestion near schools in Solano County, and the growing childhood obesity epidemic. The program works to encourage more students to walk and bike to school by identifying a balance of traffic calming and safety engineering projects, student education & safety training, encouragement contests & events, and enforcement coordination with police. The program also strives to increase interagency cooperation to continue to plan and implement SR2S projects with all local agencies. Recognizing that SR2S projects and programs are local and that the STA must also play a countywide leadership role in planning and funding these projects, STA carried out a bottom-up and top-down approach for this plan and set up an implementation and funding program after the plan was developed.

To create local SR2S plans, the STA created multi-disciplinary local task forces composed of a combination of a City Engineer, Bicycle/Pedestrian Advisory Committee members, City Council appointee, School Board appointee, and a police department representative. Between walking audits at schools sites and evening meetings with parents, students, and teachers, the local task forces reviewed school travel problems and agreed to potential solutions.



All seven city councils and seven school boards adopted their local plans and appointed either their task forces or existing committees to continue to plan and implement SR2S projects and programs within their community. The Countywide SR2S Plan was adopted by the STA Board in February 2008.



A total of 29 schools participated in walking audits and planning events involving not only local task force members but an estimated 450 teachers, parents, students, and neighbors. The Countywide SR2S Plan identifies \$1 million in annual program costs and \$31 million in countywide engineering costs. On May 16, 2008, the Countywide Safe Routes to School Plan received the “Grassroots Initiative Award” from the Northern Section, California Chapter of the American Planning Association (NSCCAPA).

After adoption of the STA’s Countywide SR2S Plan in February 2008, the STA implemented two pilot programs:

- 1) \$300,000 for engineering grants;
- and 2) four school pilot Bike Rodeos and



Walk & Roll events. Bike Rodeos are a series of bike safety training stations designed to improve bicycling skills and rider awareness in cooperation with local police. Walk and Roll days are encouragement events where students who walk and bike to school are given tickets (a few blocks from school by volunteers) that they can redeem for treats and prizes.

In October 2008, the STA received a \$400,000 Bay Area Air Quality Management District (BAAQMD) Transportation for Clean Air (TFCA) Regional Grant to help fund the program for the next two fiscal years.



## Solano Napa Commuter Information

The Solano Napa Commuter Information program (SNCI) provides information about alternative transportation options to Solano and Napa County residents and employees. SNCI provides incentives to encourage residents to choose methods other than single occupancy cars for their commute. The SNCI program is a partnership between STA, the Napa County Transportation and Planning Agency, MTC, and the Bay Area Air Quality Management District.



In 2007 and 2008, SNCI:

- Staffed 116 community and business events where commuter information was offered
- Responded to 6,600 client information calls and internet requests
- Completed 2,100 client placement calls
- Processed 1,775 carpool/vanpool matchlists
- Supplied 241 commuter information display location
- Distributed 100,000 pieces of transit literature such as bus, ferry and train schedules and maps
- Formed 26 new vanpools and provided over 726 assists to existing vanpools
- Conducted 41 employer consultations
- Developed and implemented the Solano Commute Challenge, an incentive program that encouraged employers and employees in Solano County to use commute alternatives.

## Solano Employer Commute Challenge

The Solano Employer Commute Challenge was a campaign for Solano County large employers that involved the local business community in addition to employers and employees. The overall goal for this campaign was to increase and sustain Solano County employees' use of alternative transportation. The Commute Challenge for employers and their employees was to "Use transit, carpool, vanpool, bike, or walk to work at least 30 times from July to October." Incentives are provided through the STA's Solano Napa Commuter Information (SNCI) Program to employees and employers who met the Commute Challenge.

The first year (2007), 27 large employers registered to participate in this Challenge. 18 of those employers had employees that met the Challenge. A total of 296 employee participants signed up to use the Monthly Commute Logs to track their usage of commute alternatives. 133 of those registered participants became "Commute Champions" by meeting the Challenge through use of an alternative commute mode at least 30 times during the campaign period. Another 37 participants "gave it a try" and used an alternative at least 10 times. The average number of trips per participant was 49. The highest number of trips was 92. Individual participants who used a commute alternative more than anyone at their company received the "Most Outstanding Commuter Reward."



*Genentech: 2007 "Most Outstanding Workplace" Winner*

The second year (2008), 39 employers registered, a 44% increase from 2007. A total of 545 participants registered, an 85% increase from the first year. 302 (55% of all registered participants) people met the goal of Commute Champion.

## SolanoExpress

Solano County's seven intercity bus routes became collectively known as SolanoExpress in 2007. The new SolanoExpress identity reflects the seven streamlined, freeway-based routes with fewer stops, faster and more convenient service thanks to improvements made over several years. Regional Measure 2 (RM 2) funding (voter-approved bridge toll money) was secured in 2007 to launch a new phase of the SolanoExpress services with the initiation of SolanoExpress Route 78 in 2008 between Vallejo, Benicia, BART and Baylink Ferry along the I-680/I-780 corridor.

SolanoExpress bus ridership increased by 11% in 2007-08 over the previous year to more than 1 million riders. In addition to starting Route 78, Route 30 was expanded to increase frequency to Dixon, Davis and Sacramento.



## Emergency Ride Home

The Solano Emergency Ride Home (ERH) program offers Solano employers and employees who use an alternative mode to work (carpool, vanpool, bicycle, or transit) a free ride home in case of an emergency. If a registered employee needs an emergency ride home, they may use a local taxi or rental car company. Forty-five (45) employers are registered in the program and 60 of their employees are enrolled in and have been provided an emergency ride home as part of the program.



## Lifeline Transportation

The MTC's Lifeline Transportation Program improves mobility for residents of low-income communities. It funds solutions identified in Community-Based Transportation Plans (CBTPs) or countywide Welfare to Work plans. STA assumed responsibility for this program for Solano County for the first time in 2006. Following a Call for Projects and selection process, the initial Lifeline program demonstrated six projects that were collectively awarded \$359,000 in funding in 2007:

- Benicia Industrial Park Shuttle
- Dixon Saturday bus service
- Rio Vista peak time transit service to Fairfield
- Children's shuttle program expansion
- Benicia Community Action Council (CAC) Countywide vehicle repair and loan program
- Fairfield Community Action Council (CAC) transportation voucher program

In 2008 CBTPs were completed in Vallejo and Fairfield/Suisun City/Cordelia. 14 projects were awarded \$2.9 million, including:

- Benicia DRIVES/CARS Programs
- Fairfield and Suisun Transit Racks, shelters, replacement buses, downtown Flex shuttle, Rte 2 expansion
- Dixon Saturday transit service; additional buses
- Vacaville bus shelters
- Vallejo Transit Routes 1, 5 & 85 operating funds/shelters

## Transportation for Livable Communities

The Metropolitan Transportation Commission (MTC) created the Transportation for Livable Communities (TLC) Program for the Bay Area in 1998 in an effort to promote the relationship between transportation and land use planning. The TLC program provides funding incentives for “smart growth” or “transit oriented development” through a combination of federal Congestion Mitigation Air Quality (CMAQ) Improvement Program and Transportation Enhancement (TE) funds. The STA, in partnership with MTC, developed a similar funding program specifically for TLC plans and projects in Solano County. In 2007, the STA continued to support the cities and the County of Solano in developing TLC plans and capital projects previously approved in 2006. These projects included:

- Fairfield Allan Witt Park Transportation Linkage Plan
- Rio Vista Waterfront Plan
- Vacaville Creekwalk Extension/Eastern Downtown Vision Plan
- Benicia State Park Road and Pedestrian Bridge Capital Project
- Suisun City Driftwood Drive Waterfront Project Capital Project
- Solano County-Old Town Cordelia Improvement Project Capital Project

Collectively, the funding awarded for these projects and plans totaled approximately \$2 million.

Each project and plan addressed the Solano TLC Program’s objective to enhance and encourage higher density mixed-use infill developments that promote bicycle, transit and pedestrian uses.

In 2008, the North Connector TLC Corridor Concept Plan was adopted. The Plan’s scope encompasses the planned North Connector roadway segments between Abernathy Road and State Route (SR) 12 Jameson Canyon as well as adjacent streets in the Fairfield and Solano County jurisdictions. The plan highlights design improvements with TLC concepts, which include alternative modes connections, such as bicycle and pedestrian, to residential, employment, civic and retail land uses throughout the corridor.





## Solano Bicycle and Pedestrian Program

Working with its Bicycle and Pedestrian Advisory Committees, STA established the Solano Bicycle and Pedestrian Program (SBPP) in 2005. Funding for the SBPP comes from three sources:

Transportation Development Act (TDA) Article 3 funds, Countywide Bicycle and Pedestrian funds through MTC's Regional Bicycle and Pedestrian Program (RBPP), and Eastern Solano Congestion Mitigation Air Quality (ECMAQ) Improvement Program funds.

The SBPP strategizes funding for priority regional bicycle and pedestrian projects. STA staff and the two committees work with local agencies to develop and maintain a comprehensive list of priority bicycle and pedestrian projects and their anticipated costs. The SBPP list of priority projects is updated and reprioritized every three years.

For Fiscal Year (FY) 2007-08, the following projects were programmed for funding:

Sponsor	Project	Funding Amount
Solano County	Suisun Valley Road Bridge	\$110,000
Solano County	Vacaville-Dixon Bikeway, Phase II	\$343,000
City of Vacaville	Nob Hill Bike Path	\$300,000
City of Vacaville	Ulatris Creek Bike Path (Ulatris to Leisure Town)	\$127,000



For FY 2008-09, the following projects were programmed for funding:

Sponsor	Project	Funding Amount
City of Benicia	State Park Road	\$942,000
City of Fairfield	McGary Road Regional Bike Path	\$825,000
City of Fairfield	W. Texas St. Gateway, Phase I & II	\$85,000
Solano County	Vacaville-Dixon Bikeway, Phase III	\$337,000
City of Vacaville	Ulatris Creek Bike Path (Allison to I-80)	\$169,000

## Solano County Clean Air Funds

The STA is a partner with the Yolo Solano Air Quality Management District (YSAQMD) and the Bay Area Air Quality Management District (BAAQMD) to provide funding to improve air quality in Solano County. The STA is the BAAQMD's program manager for 40% Program Manager Transportation Fund for Clean Air (TFCA) Program. The STA also partners with the YSAQMD to prioritize eligible projects for the YSAQMD's Clean Air Program.

Combined, Solano County annually receives approximately \$750,000 for capital projects that have a measureable impact on air quality. Funding for the TFCA and Clean Air Program is provided by a surcharge on vehicle registration fees. In addition to registration fees, funding for the YSAQMD Clean Air Program is also generated through a special property tax.

TFCA funds are available to clean air projects and programs located in the cities and County jurisdictions in the south-western portion of Solano County. As the Program Manager for the TFCA funds from the BAAQMD, the STA Board approved \$332,614 for the following projects in 2007:



Sponsor	Project	Funding Amount
City of Benicia	Benicia Breeze Bus Engine Retrofits	\$10,000
City of Fairfield	Transit Racks for Bicycles	\$13,120
City of Fairfield	Union Ave. Pedestrian Safety Project	\$87,247
Solano-Napa Commuter Information	Commuter Incentives Program	\$222,247

The remaining portion of the County is eligible for the YSAQMD's Clean Air Program. The STA Board assisted the YSAQMD in allocating \$420,000 from the YSAQMD's Clean Air Program in 2007 for the following projects:

Sponsor	Project	Funding Amount
Breathe California	California Clean Air Public Awareness Program	\$31,000
City of Rio Vista	Delta Breeze Bus Retrofit	\$25,000
Solano County	Heavy Truck PM Retrofit	\$35,000
Solano County	Vaca-Dixon Bike Path (Phase 2)	\$150,000
City of Vacaville	Nob Hill Bike Path	\$50,000
City of Vacaville	Ulati Creek Bike Path	\$29,000
City of Vacaville	Alternate Fuels Program	\$100,000

The following requests for \$323,516 TFCA funding were approved for 2008:

Sponsor	Project	Funding Amount
STA	Solano County Safe Routes to School Program	\$116,263
STA/SNCI	Solano Commute Alternative Services Program	\$207,253



The following \$420,000 in YSAQMD funds was approved for allocation in 2008:

Sponsor	Project	Funding Amount
Breathe California	California Clean Air Public Awareness Program	\$20,000
City of Rio Vista	Waterfront Multi-use Path	\$160,000
Solano County	Heavy Truck PM Retrofit	\$8,000
Solano County	Vaca-Dixon Bike Path (Phase 2)	\$40,000
STA	Safe Routes to School Engineering	\$60,000
City of Vacaville	Alternate Fuels Program	\$100,000
City of Vacaville	Ulati Creek Bike Path	\$22,000
City of Vacaville	Vacaville CityCoach Marketing	\$10,000



In addition to TFCA 40% Program Manager Funds, the BAAQMD has a similar but separate funding program called Regional TFCA funds. The Regional TFCA funds are administered directly by the BAAQMD and annually issues a competitive call for projects among the nine Bay Area counties. In 2008, \$400,000 was approved for the STA's Safe Routes to School Program:

Sponsor	Project	Funding Amount
STA	Safe Routes to School Program	\$400,000

## Solano Congestion Management Program

As the Congestion Management Agency (CMA) for Solano County, the STA is responsible for running a Congestion Management Program (CMP). The CMP maintains a high level of transportation system operations by requiring an analysis of the effects of congestion and land use decisions on the transportation system. The CMP also coordinates mitigation of the impacts to the system county-wide. STA staff continued to review large-scale development projects and proposed General Plan amendments for consistency with the CMP. The CMP was updated in 2007 and will be updated again in 2009. Several projects were reviewed for CMP conformity in 2007 and 2008. Because the CMP is a bi-annual program, no update work occurred in 2008.



## Abandoned Vehicle Abatement

The Abandoned Vehicle Abatement (AVA) Program removed 4,052 abandoned vehicles in FY 2006-07, and 3,347 abandoned vehicles in FY 2007-08. A \$1 registration fee on all vehicles funds the program and is administered by the California Highway Patrol. The STA is the AVA Authority for Benicia, Dixon, Fairfield, Suisun City, Vacaville, Vallejo, and Solano County.

## Disadvantaged Business Enterprise

The STA has established a Disadvantaged Business Enterprise (DBE) program in accordance with regulations of the U.S. Department of Transportation (USDOT) and their Office of Small and Disadvantaged Business Utilization (OSDBU) to create a level playing field on which DBEs can compete fairly for contracts and subcontracts relating to the STA's construction, procurement and professional services activities. It is the policy of the STA to ensure nondiscrimination on the basis of race, color, sex or national origin in the award and administration of US DOT-assisted contracts.

In FY 2007–08, the STA's DBE goal for spending federal funds through certified DBEs was 18.2% and 4.8% for FY 2008-09.

## Legislative

Each year, STA staff monitors state and federal legislation pertaining to transportation issues. The STA Board-adopted Legislative Priorities and Platform also serve as a guideline for legislative trips to Sacramento and Washington, D.C.

### State

On March 7, 2007, members of the STA Board were joined by representatives of Solano Economic Development Corporation (EDC), the Fairfield/Suisun Chamber of Commerce, the Vacaville Chamber of Commerce and the Vallejo Chamber of Commerce on a trip to Sacramento to advocate for state funding for our priority projects. The focus of the trip was safety on SR 12 and the rash of recent fatalities on SR 12. In addition, the STA Board highlighted the importance of obtaining Proposition 1B – Trade Corridor Improvement Funds for the I-80 Eastbound Cordelia Truck Scales relocation.



On February 19, 2008, members of the STA Board and business representatives once again met with delegates in Sacramento to advocate for Solano County's transportation priorities. The focus of the trip was Prop 1B funding for the Cordelia Truck Scales, cleanup legislation for the San Francisco Bay Area Water Emergency Transportation Authority (WETA) on behalf of Vallejo Baylink Ferry, and the lowering of the voter threshold to 55% for special local taxes for transportation measures.



*Chair Woodruff and the 2008 group briefed Senator Pat Wiggins in Sacramento*

## Federal

On March 26-28, 2007, members of the STA Board were joined by representatives of Solano EDC and the Fairfield/Suisun Chamber of Commerce on a trip to Washington, D.C., to advocate for federal appropriations funding for five priority projects. During the trip, STA met with Congressman George Miller, Congresswoman Ellen Tauscher and Congressman Dan Lungren. The STA also met with U.S. Senator Barbara Boxer and staff of Senator Diane Feinstein to seek their support on the Senate side.

On April 1-3, 2008, STA Board members and a representative of Solano EDC advocated for a total of \$13.35 million in federal earmarks for FY (Fiscal Year) 2009 for the following five projects:



*Chair Intintoli and the 2007 Group Met with US Senator Barbara Boxer in Washington DC*

- Travis AFB North Gate Access Improvements/Jepson Parkway - \$5 million
- Vallejo Ferry Maintenance Facility, Phase 3 – \$2 million
- Bus Replacement/Expansion (Alternative Fuel) – SolanoExpress - \$2 million
- Fairfield/Vacaville Intermodal Station - \$2.5 million
- Vacaville Intermodal Station, Phase 1 - \$1.85 million

A total of \$45.8 million in federal funds has been obtained as a direct result of STA advocacy efforts with Washington, D.C. since 1998.



*Above: Fairfield/Vacaville Train Station Rendering  
Below: Travis AFB North Gate Access*





## STA Annual Awards

Each year, the STA Board recognizes the individuals, programs, activities and projects that have contributed to our continued success in “improving the quality of life in Solano County by delivering transportation projects to ensure mobility, travel safety and economic vitality.”

The event is held in the STA Board Chair’s city, and provides the opportunity to showcase the top individuals, projects and agencies of the last year. The 10<sup>th</sup> Annual Awards Ceremony was held in 2007 at the newly-renovated Empress Theatre in Vallejo, hosted by the 2007 STA Board Chair, Vallejo Mayor Anthony J. Intintoli, Jr.

The **2007** winners were:

### Agency of the Year

- City of Vacaville

### Advisory Committee Member of the Year

- Pat Moran, Pedestrian Advisory Committee (PAC)

### Project of the Year

- Downtown Transit Plaza, City of Vacaville

### Safety Project of the Year

- Safe Routes to School Program, City of Benicia

### Transit Employee of the Year

- Crystal Odum Ford, Vallejo Transit

### Business of the Year

- Genentech, Vacaville Campus

### Partner of the Year

- California Highway Patrol, Solano Area Office
- Highway 12 Association

### Project Delivery

- City of Vacaville Public Works

### State/Federal Elected Official of the Year

- The Honorable Lois Wolk, 8th Assembly District

### Special Award

- Bay Area Toll Authority, New Benicia-Martinez Bridge
- Caltrans, New Benicia-Martinez Bridge
- Anthony J. Intintoli, Jr., STA Chair



In 2008, the event was held at the Trilogy Clubhouse Ballroom in Rio Vista, hosted by the 2008 STA Board Chair, Rio Vista Mayor Eddie Woodruff.

The **2008** winners were:

### Agency of the Year

- Solano County

### Advisory Committee Member of the Year

- Robin Cox, Safe Routes to School Committee
- Larry Mork, Bicycle and Pedestrian Advisory Committees (BAC / PAC)

### Project of the Year

- Wilson Avenue Improvement Project, City of Vallejo

### Safety Project of the Year

- Highway 12 Safety Enforcement, California Highway Patrol / Office of Traffic Safety

### Transit Employee of the Year

- Cindy Muckensturm, Dixon Read-Ride

### Business of the Year

- NorthBay Health Care, Fairfield

### Partner of the Year

- Caltrans District 4, I-80 HOV Lane / I-80 Pavement Rehabilitation / Highway 12 Safety Improvements

### Project Delivery

- Caltrans District 4, I-80 Pavement Rehabilitation / Highway 12 Truck Climbing Lane

### State/Federal Elected Official of the Year

- The Honorable Patricia Wiggins, California Senate District 2

### Special Award

- John Silva, Solano County Board Chair, Former STA Board Member
- Mary Ann Courville, STA Board Member, Mayor of Dixon
- Eddie Woodruff, STA Board Chair, Mayor of Rio Vista



## Planning for the Future

### North Connector TLC Corridor Concept Plan

In conjunction with a consulting firm, STA, Solano County and the City of Fairfield developed a concept plan for bicycle and pedestrian improvements to the North Connector. The North Connector will be a roadway connecting Abernathy Road and SR 12, east through a portion of Cordelia to SR 12 west at Red Top Road. The Transportation for Livable Communities Corridor Concept Plan created a common design theme and a series of improvements that can be used by Fairfield and the County when portions of the roadway in their jurisdiction are developed. The Plan has been adopted by the STA Board, the Solano County Board of Supervisors and the Fairfield City Council.

### I-80 Smarter Growth Study

I-80 is one of the key corridors for the mobility of people and goods into and out of the Bay Area, and it is the heart of Solano County's travel system. The I-80 Smart Growth Study was initiated by the Metropolitan Transportation Commission (MTC), and designed to look at how congestion along the I-80 corridor would be affected by channeling future growth into higher density areas supported by transit. As part of the project, MTC funded an updated Solano-Napa Travel Demand Model. The study was completed in 2008, and a transportation summit based on the study's findings was held at UC Davis in April 2008.



Vacaville Downtown Transit Plaza



### State Route 113 Major Investment Study (MIS)

STA has been working since mid-2007 with the City of Dixon, the City of Vacaville, Solano County, and the Yolo County Transportation District to conduct a Major Investment Study for State Route (SR) 113, from SR 12 through Dixon to the Yolo County line. During the year, the consultant team met with the staff working group to help establish baseline information such as traffic patterns, roadway conditions and land uses, and to begin looking at expected future traffic conditions. The Steering Committee, comprised of elected officials, also met to provide initial direction on development of the study. The study's technical work was completed in late 2008. The follow-up implementation plan includes a menu of options and priorities for improving safety and traffic flow on SR 113.





## Transit Consolidation Study

At the direction of the STA Board, a countywide Transit Consolidation Study was kicked off at the beginning of 2007. A consultant was retained and the first phase was completed. Phase 1 involved interviewing nearly 40 stakeholders ranging from public officials and funding partners to transit operator staff and transit riders to collect a range of perspectives on the opportunities and challenges perceived relative to full or partial transit consolidation. The goals of the study include:

- Streamline transit service and improve access for riders.
- Achieve service efficiencies.
- Provide a central focus for transit service for Solano County.
- Create a more robust transit service to meet the growing transit needs of the County.

At the conclusion of Phase 1, criteria for evaluating options were approved, a Transit Consolidation Steering Committee was established, and 6 consolidation options were identified to be studied in Phase 2. Phase 2 began in 2008. In December 2008, a second Transit Consolidation Steering Committee conducted a preliminary review of the six existing operators' finances, capital, staffing, and paratransit services and identified long-term funding stability at existing service levels a concern in several areas of the county. Phase 2 is projected to be completed by June 2009.





## STA's 2007 Highlights

### First Quarter

- Vallejo Mayor Anthony J. Intintoli, Jr. was named STA Chair and Benicia Mayor Steve Messina was named Vice-Chair.
- Sponsored State Legislation (AB 112 – Wolk) designating State Route (SR) 12 Corridor as a double fine zone through construction of various SHOPP projects along the corridor.
- Co-sponsored an Office of Traffic Safety (OTS) grant application with the California Highway Patrol (CHP), the city police departments and the County Sheriff's department to develop a SR 12 Safety Plan.
- Reinstated the SR 12 Steering Committee to provide additional SR 12 Safety and funding recommendation to the STA Board.
- Programmed \$17 million of 2006 STIP Augmentation funds for SR 12 Jameson Canyon, Fairfield-Vacaville Rail Station, Vallejo Ferry Maintenance, Jepson Parkway, Dixon Transit Center, Planning, and Programming & Monitoring (PPM) efforts.
- Initiated construction of the Green Valley Bridge Widening Project (first construction project STA has managed).
- Approved a service and funding agreement for SolanoExpress Routes 30 and 90 with Fairfield/Suisun Transit.
- Initiated the SR 113 Major Investment and Study.
- Initiated Countywide Transit Consolidation Study.



I-80 Pavement

- Approved the environmental documents for the I-80 HOV Lanes Project.
- Publicly released two alternatives to be carried forward into the environmental document for the I-80/I-680/SR 12 Project.

### Second Quarter

- Hosted a Public Information/Open House to receive public input on the alternatives for the I-80/I-680/SR 12 Project.
- STA's Solano Napa Commuter Information (SNCI) staff coordinated the Bike to Work Week campaign for Napa and Solano Counties (May 14-18) with over 1,000 participants and 12 energizer stations.



- Allocated \$953,098 Solano Bicycle Pedestrian Program (SBPP) Funds for Fiscal Year (FY) 2007-08 for City of Fairfield's West Texas Street Gateway Project, City of Vacaville's Nob Hill and Ulatis Creek Bike Paths, Solano County's Suisun Valley Road, and Vacaville Dixon Bikeway, Phase 2.
- Dedicated \$744,000 in FY 2007-08 Bicycle/Pedestrian funding for City of Benicia's State Park Bike/Ped Bridge and City of Fairfield's McGary Road Project to combine with funding for projects in FY 2008-09.

### Third Quarter

- Approved I-80 HOV Lanes Design.
- Initiated SNCI Program's "Solano Commute Challenge" outreach campaign for Solano County employers, local businesses and employees to use transit, carpool, vanpool, bike, or walk to work at least 30 times from July to October.
- STA's SNCI Program formed ten (10) new vanpools, supported 118 display racks, and distributed over 55,000 pieces of transit information in FY 2006-07.

## 2007 Highlights

- Provided \$895,800 of Solano Transportation for Livable Communities Capital Grants to City of Fairfield's Union Ave./Suisun City Train Station Pedestrian Safety Improvement Project, and City of Vacaville's Downtown Creekwalk Extension.
- Celebrated with Caltrans and the City of Benicia the grand opening of the new Benicia Martinez Bridge.
- Co-sponsored legislation designating a two-mile section of SR 12 the "Officer David Frank Lamoree Memorial Highway" to raise driver awareness of SR 12 traffic safety.



SR 12 Temporary Median Barrier

## Fourth Quarter

- STA-sponsored AB 112 (Wolk), the SR 12 safety enhancement bill, was enacted into law.
- Approved the \$14.4 million Draft 2008 State Transportation Improvement Program (STIP).
- Authorized initiation of the Solano Comprehensive Transportation Plan Update.
- Approved the Solano Bicycle Pedestrian Program (SBPP) 3-Year Plan.
- Hosted 10<sup>th</sup> Annual STA Awards Ceremony at Vallejo's Empress Theatre.
- Celebrated success of Solano Commute Challenge; 27 major employers totaling 296 employees participated countywide.
- Celebrated with City of Vacaville the grand opening of the Downtown Transit Plaza.
- Programmed \$1.2 million of Eastern Solano Congestion Mitigation and Air Quality funding for Vacaville Intermodal Station Project, and STA's Safe Routes to School Program.
- SolanoExpress 11% total ridership service increase.



I-80 Eastbound Truck Scales (Existing)

## STA's 2008 Highlights

### First Quarter

- Highway 12 from I-80 to I-5 was designated a Double-Fine Zone by State Legislature.
- Rio Vista Mayor Eddie Woodruff sworn in as STA Chair and Solano County Supervisor Jim Spering as Vice Chair.
- Initiated Transit Consolidation Study Phase 2.
- Approved Countywide Safe Routes to School Plan and created STA's Safe Routes to School Program.
- STA is designated lead agency for design of SR 12 Jameson Canyon Widening Project.
- Office of Traffic Safety grant funded more CHP enforcement/public education for SR 12 safety.

### Second Quarter

- STA's I-80 Eastbound Cordelia Truck Scales Relocation Project was fully funded with Proposition 1B Trade Corridor Improvement Funds by California Transportation Commission.
- STA's SR 12 Safety Plan received a statewide "Award of Merit" by the California Association of Public Information Officials (CAPIO).
- STA's Safe Routes to School Plan received regional "Grass Roots Initiatives" award from Northern Section of California Chapter of American Planning Association (NSCCAPA).
- STA's Solano Napa Commuter Information (SNCI) staff coordinated the 2008 Bike to Work Week campaign for Napa and Solano Counties (May 12-16) with over 1,160 participants and 15 energizer stations.

- Partnered with Caltrans in joint public outreach campaign promoting 27 miles of rehabilitation construction along the I-80 corridor accelerated by Caltrans; held public information meetings.
- Co-hosted groundbreaking with Caltrans on I-80 HOV Lanes Project; Caltrans awarded contract for \$26.6 million, 45% under engineer's estimate.



*Proposed I-80 HOV Lane*

- Programmed \$260,000 in Safe Routes to School Pilot Engineering Program Grants for the Cities of Dixon, Rio Vista and Vacaville; nearly \$2 million in funding secured in first year of SR2S Program.
- Allocated \$192,000 for Solano Paratransit operating costs, and \$60,000 for the Solano Paratransit Assessment and Alternatives Feasibility Study.
- Authorized \$1.9 million in Regional Measure (RM 2) Bridge Toll Transit Operating Funding claims for Fairfield and Suisun Transit (FAST), and Vallejo Transit.
- Accepted Green Valley Creek Bridge Widening Project as complete, STA's first construction project.
- Launched SolanoExpress 10-ride tickets and Baylink Ferry Daypass marketing promotion.

## Third Quarter

- Initiated a Feasibility Study for Regional Transportation Impact Fees.
- Initiated study to evaluate the existing Solano Paratransit service.
- Adopted Community Based Transportation Plans for Vallejo and Cordelia/Fairfield/Suisun City.
- Adopted the North Connector Transportation for Livable Communities (TLC) Corridor Concept Plan.



- Celebrated with Capitol Corridor the Groundbreaking of Bahia Crossover in Benicia.
- STA's SNCI Program formed 16 new vanpools, supported 118 display racks, and distributed over 108,000 pieces of transit information in FY 2007-08.
- SolanoExpress bus ridership increased by 11% over previous year (over 1 million riders); started new Route 78 and expanded Route 30.
- Dedicated Officer David Frank Lamoree Memorial Sign on SR 12.

## Fourth Quarter

- Hosted the 11<sup>th</sup> Annual STA Awards Ceremony at Trilogy in Rio Vista.
- Celebrated success of 2<sup>nd</sup> annual "Solano Commute Challenge" outreach campaign for Solano County employers, local businesses and employees to use transit, carpool, vanpool, bike, or walk to work; 39 major employers (45% more than last year) totaling 545 employees (85% more than last year) participated countywide.
- Celebrated with Caltrans the opening of SR 12 West Truck Climbing Lane.
- MTC awarded Fairfield \$9 million in RM 2 funds to fully fund the Fairfield/Vacaville Rail Station.
- Approved Nexus Study Scope of Work for the Regional Transportation Impact Fee (RTIF).



*Roadway Paving Construction*

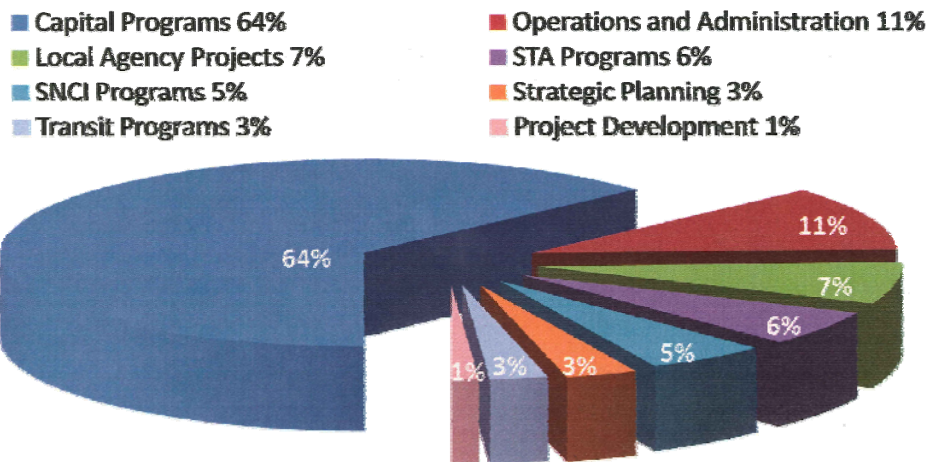


## Financials

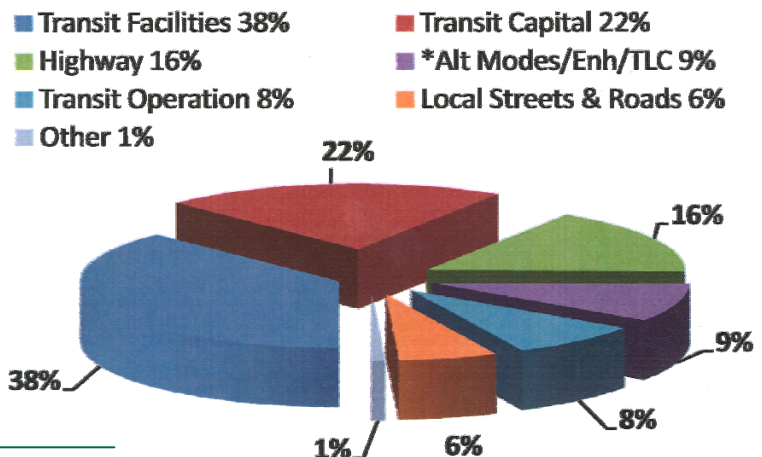
The Solano Transportation Authority Board adopts a two-year budget for STA operations and programs. This two-year budget is updated with adoption of the annual budget. This budget system authorizes and provides STA the basis for appropriate budgetary control of its financial operations for the fiscal year and for multi-year funded projects. The budget consists of capital programs, operations and administration, STA programs, Solano Napa Commuter Information programs, local agency projects, transit programs, strategic planning, and project development.

STA is required to prepare annual financial statements in accordance with Government Accounting Standards Board Statement Number 34 (GASB 34). In addition, STA is required to prescribe uniform accounting policies and procedures in accordance with the Single Audit Act of 1984, and the Office of Management and Budget (OMB) Circular A-133 (Audits of States, Local Governments, and Non-Profit Organizations), and Circular A-87 (Cost Principles of State, Local, and Indian Tribal Government). Based on the results of the independent audits for FY 2006-07 and FY 2007-08, the STA received unqualified audits with no findings.

**STA Budget FY 2006-07**  
**\$10.74 Million**



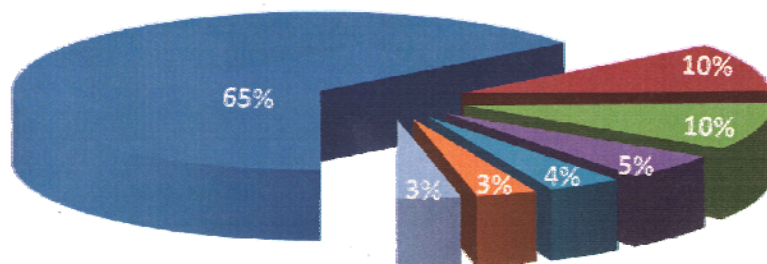
**STA State & Federal Programming**  
**FY 2006-07 \$57.88 Million**



*Canon/Vanden Road Access to Travis AFB North Gate*

## STA Budget FY 2007-08 \$15.27 Million

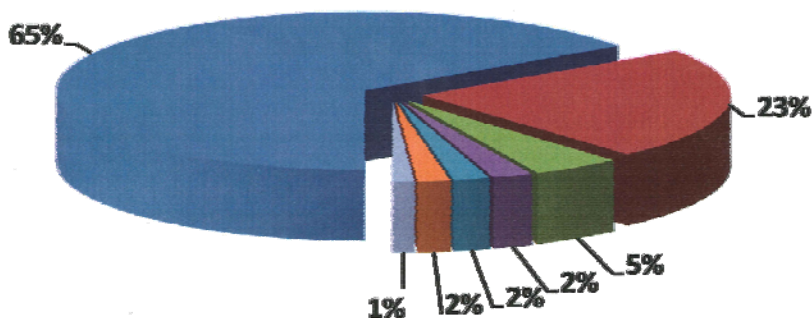
- Capital Programs 65%
- Transit/SNCI Programs 10%
- STA Programs 4%
- Strategic Planning 3%
- Operations and Admin 10%
- Local Agency Projects 5%
- Project Development 3%



*Vacaville Downtown Transit Plaza Opening*

## STA State & Federal Programming FY 2007-08 \$156.51 Million

- Highway 65%
- \*Alt Modes/Enh/TLC 5%
- Local Streets & Roads 2%
- Other 1%
- Transit Facilities 23%
- Transit Operation 2%
- Transit Capital 2%



*I-80 HOV Lanes Construction*



\*Alternative Modes/Enhancements/Transportation for Livable Communities



*I-80 HOV Lanes Groundbreaking*

## Public Participation and Advisory Committees

### Technical Advisory Committee

Public Works Directors and other engineering and planning staff representing each member jurisdiction serve on the STA Technical Advisory Committee (TAC). The TAC provides technical review and input, and recommendations to the STA Board of Directors on transportation projects and funding affecting Solano County. The 2007 and 2008 TAC representatives were:

**Dan Schiada**  
Benicia

**Royce Cunningham**  
Dixon

**Gene Cortright**  
Fairfield

**Brent Salmi**  
Rio Vista

**Paul Wiese**  
Solano County

**Fernando Bravo** 2007 / **Dan Kasperson** 2008  
Suisun City

**Dale Pfeiffer**  
Vacaville

**Gary Leach**  
Vallejo

**Janet Adams**  
Committee Staff Liaison



### Transit Consortium

SolanoExpress Intercity Transit Consortium members consist of local transit staff. The Consortium helps coordinate intercity transit issues and provides input and recommendations on transit plans, services and funding to both the TAC and the STA Board of Directors. The 2007 and 2008 Consortium representatives were:

**Brian McLean**, 2007 Chair  
Vacaville City Coach

**Rob Sousa**, 2008 Chair  
Benicia Breeze

**Crystal Odum Ford**, 2008 Vice Chair  
Vallejo Transit

**John Andoh**  
Rio Vista Delta Breeze

**Jeff Matheson**  
Dixon Read-Ride

**George Fink**  
Fairfield and Suisun Transit

**Paul Wiese**  
Solano County

**Elizabeth Richards**  
Committee Staff Liaison





## Paratransit Coordinating Council

The Paratransit Coordinating Council (PCC) works on countywide senior and disabled transit issues and makes recommendations on transit and paratransit funding, claims and coordination.

The 2007 and 2008 PCC representatives were:

- Jim Simon**, 2007 Chair  
Member-at-Large
- George Bartolome**, 2007 Vice Chair, 2008 Chair, Social Service Provider
- Jim Williams**  
Member-at-Large
- Richard Burnett**  
Metropolitan Transportation Commission Elderly & Disabled Advisory Committee (MTC EDAC)
- Catarina Evanson**  
Public Agency - Education
- Kim Barkus**  
Public Agency – Health & Human Services
- Deanna Dupont**, 2007  
Social Service Provider
- Leticia Hammons**, 2007  
Social Service Provider
- Susan Rotchy**  
Social Service Provider
- Tom Morgan**  
Transit User
- Shirley Stacy**  
Transit User
- Liz Niedziela**  
Committee Staff Liaison



## Bicycle Advisory Committee

The Bicycle Advisory Committee (BAC) updates and monitors the Countywide Bicycle Plan and makes recommendations for bicycle projects and funding to the STA TAC and the STA Board of Directors.

The 2007 and 2008 BAC representatives were:

- Glen Grant**, 2007 Chair  
Solano County
- Barbara Wood**, 2007 Vice Chair, 2008 Chair  
Member-at-Large
- Larry Mork**, 2008 Vice Chair  
Rio Vista
- J.B. Davis**  
Benicia
- James Fisk**  
Dixon
- Randy Carlson**  
Fairfield
- Mike Segala**  
Suisun City
- Ray Posey**  
Vacaville
- Mick Weninger**  
Vallejo
- Robert Guerrero**  
Committee Staff Liaison



## Pedestrian Advisory Committee

The Pedestrian Advisory Committee (PAC) updates and monitors the progress of the Solano County-wide Pedestrian Plan and makes funding recommendations for countywide pedestrian-related projects to the STA TAC and the STA Board. The 2007 and 2008 PAC representatives were:

**Eva Laevastu**, 2007 Chair  
Bay Area Ridge Trail Council

**Lynne Williams**, 2007 Vice Chair, 2008 Chair  
Vallejo

**Pat Moran**, 2008 Vice Chair  
Fairfield

**J.B. Davis**  
Benicia

**Mike Smith**  
Dixon

**Larry Mork**  
Rio Vista

**Linda Williams**  
Solano County

**Michael Segala**  
Suisun City

**Todd and Carol (2008) Rewick**  
Vacaville

**Kathy Hoffman**, 2008  
Bay Area Ridge Trail Council

**Allan Deal**  
Member-at-Large

**Maureen Gaffney**  
San Francisco Bay Trail Program

Vacant  
Solano Community College  
Solano County Agricultural Commission

**Frank Morris**  
Solano Land Trust

**Brian Travis**  
Tri-City and County Cooperative Planning Group

**Sara Woo**  
Committee Staff Liaison



## Lifeline Advisory Committee (LAC)

The STA established a Lifeline Advisory Committee in 2006 to review Lifeline funding applications. Members include representatives from a Community Action Council, Children's Network, Transit Consortium, Paratransit Coordinating Council, Solano County Health and Social Services and a Member-at-Large. This committee makes project funding recommendations to the STA Board. The 2007 and 2008 LAC representatives were:

**Mary Ann Courville**, Chair  
Dixon

**Steve Messina** 2007 / **Elizabeth Patterson** 2008  
Benicia

**Jack Batson** 2007 / **Chuck Timm** 2008  
Fairfield

**Mike Segala**  
Suisun City

**Anthony J. Intintoli, Jr.** 2007 / **Osby Davis** 2008  
Vallejo

Vacant  
Solano County Supervisor (for Lifeline Project Evaluation)

**Gail Jack**  
Solano County Welfare to Work Program

**Kim Johnson** 2007 / **Gerry Raycraft** 2008  
Children's Network

**Mary Frances Kelly Poh** 2007 / **Cookie Powell** 2008  
Community Action Council

**Richard Broaddus** 2007 / **Kim Barkus** 2008  
Paratransit Coordinating Council

**Jeff Matheson**  
SolanoExpress Intercity Transit Consortium

Vacant  
Member-at-Large

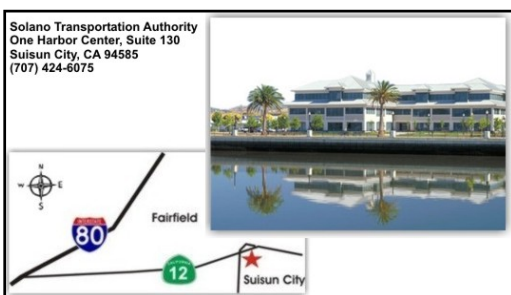
**Elizabeth Richards**  
Committee Staff Liaison



## Solano Transportation Authority Staff

The STA currently employs eighteen full-time administrative, project, and planning staff. The staff implements the policies of the STA Board and manages multiple consultant projects and programming, finances projects, and serves as the liaison with local project sponsors and regional, state and federal agencies.

STA's Solano Napa Commuter Information (SNCI) Program provides ridesharing information and services to Solano and Napa County commuters who travel to jobs throughout the Bay Area and Sacramento.



### ADMINISTRATION:

**Daryl Halls**  
Executive Director

**Charles Lamoree**  
Legal Counsel

**Johanna Masiclat**  
Clerk of the Board/Office Manager

### PROJECTS:

**Janet Adams**  
Deputy Executive Director/  
Director of Projects

**Susan Furtado**  
Financial Analyst/Accountant

**Sam Shelton**  
Project Manager

**Kenny Wan**  
Assistant Project Manager

**Barbara Padilla**  
Accounting Assistant

### PLANNING:

**Robert Macaulay**  
Director of Planning

**Jayne Bauer**  
Marketing & Legislative  
Program Manager

**Robert Guerrero**  
Senior Planner

**Sara Woo**  
Planning Assistant

**Karen Koelling**  
Administrative Assistant

Vacant

Marketing Intern

### TRANSIT AND RIDESHARE SERVICES:

**Elizabeth Richards**  
Director of Transit and  
Rideshare Services

**Judy Leaks**  
SNCI Program Manager/Analyst

**Liz Niedziela**  
Transit Program Manager/Analyst

**Sorel Klein**  
Assistant Program Manager

**Yolanda Dillinger**  
Commuter Consultant

**Nancy Abruzzo**  
Administrative Assistant





*Solano Transportation Authority*

*... working for you!*

**Solano Transportation Authority**

**Daryl Halls, Executive Director**

One Harbor Center, Suite 130

Suisun City, California 94585

707-424-6075

[www.solanolinks.com](http://www.solanolinks.com)