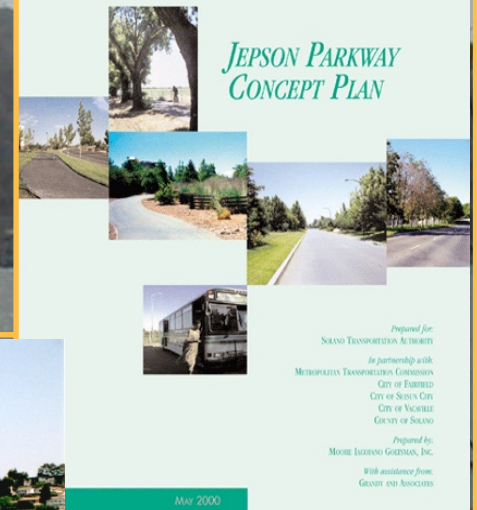
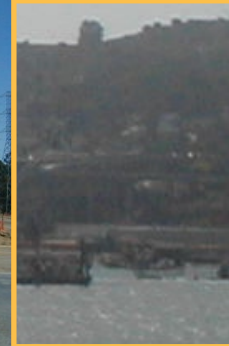


Solano Transportation Authority

Annual Report 2000



...working for you!

Solano Transportation Authority Mission Statement

**...To improve the quality of life in Solano
County by delivering transportation projects
to ensure mobility, travel safety, and
economic vitality.**

Message from the Chair



The year 2000 was an exciting and productive year for the Solano Transportation Authority. The STA

Board made some critical planning decisions and began the process of developing a vision for Solano County's transportation future. Solano County's population is projected to grow by 32% over the next 20 years, putting a tremendous strain on an already overburdened transportation system. The challenges are great and establishing the vision and priorities for our transportation system are critical.

The STA continued to focus on Solano County's most urgent transportation needs by providing funding for transit, road maintenance, highway, intermodal, and bicycle projects. This year the STA initiated several

important planning efforts and continued to make progress on priority projects, such as: the Solano Comprehensive Transportation Plan, the I-80/I-680 Interchange design, the I-80/680/780 Corridor Study, the Highway 12 Major Investment Study (MIS), Highway 37/29 project, Jepson Parkway, state and federal funding for a third Vallejo ferry, the I-80/680 Interchange (Phase I), and Highway 12 (Jameson Canyon).

I want to thank my Board colleagues, staff, member agencies and our transportation partners for their efforts and team work.

On behalf of the STA Board and staff, I am pleased to present the Solano Transportation Authority 2000 Annual Report.

Sincerely,

Dan Donahue
2000 STA Chair
Council Member, City of Vallejo

About the STA

The STA Commitment...



The STA was created in 1990 through a Joint Powers Agreement between the cities of Benicia, Dixon,

Fairfield, Rio Vista, Suisun City, Vacaville, Vallejo and the County of Solano to serve as the Congestion Management Agency for Solano. The STA is responsible for countywide transportation planning, coordination, financing priority projects and the programming of federal, state and regional transportation funds.

Goals and Objectives...

- Document transportation needs from both local and countywide perspectives
- Provide safety and operational improvements
- Preserve the existing transportation system
- Reduce congestion and maintain mobility
- Improve commute options to the Bay Area and Sacramento regions
- Promote transit including intercity bus, rail and ferries
- Promote alternative modes such as carpooling, vanpooling and bicycling
- Encourage Transportation for Livable Communities projects

2000 STA Board of Directors and Member Agencies

Working for you are members of the STA Board that are appointed by their local jurisdictions to serve as representatives. Each of the seven Solano cities and the County of Solano have one Board member and alternate who work together to address a vast array of transportation issues and priorities.

STA Board of Directors...



**Dan Donahue, Chair
Vallejo City Council**



**Marci Coglianese, Vice Chair
Rio Vista City Council**



**Pierre Bidou, Member
Benicia City Council**

**Don Erickson, Member
Mayor, City of Dixon**



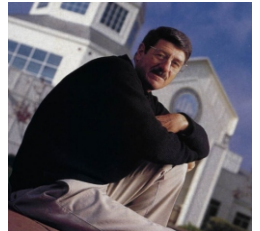
**Steve Lessler, Member
Fairfield City Council**



**John Silva, Member
Solano County Board of Supervisors**



**Jim Spering, Member
Mayor, City of Suisun City**



**Rischa Slade, Member
Vacaville City Council**



STA Committees

STA Board Alternates...

Benicia	Steve Gizzi
Dixon	Mary Ann Courville
Fairfield	George Pettygrove
Solano County	Barbara Kondylis
Rio Vista	Matt Bidou
Suisun City	Michael Segala
Vacaville	David Fleming
Vallejo	Pete Rey

Also working for you is a staff representative from each member jurisdiction that serves on the STA Technical Advisory Committee and consists of City Public Works Directors and the Director of Transportation from the County of Solano. The Solanolinks Intercity Transit Consortium brings all the transit management staff together to coordinate intercity transit issues. These two committees act in an advisory capacity to the STA Board of Directors and STA staff.

STA TAC Members...

Benicia	Virgil Mustain
Dixon	Janet Koster
Fairfield	Ron Hurlbut
Rio Vista	Jim Holden
Solano County	Paul Wiese
Suisun City	Mike Duncan
Vacaville	Dale Pfeiffer
Vallejo	Mark Akaba

STA Consortium Members...

Benicia	Alan Nadritch
Dixon	Vanessa Klaiber-Guerrero
Fairfield/Suisun	Kevin Daughton
Rio Vista	Jim Holden
Vacaville	Trent Fry
Vallejo	Pam Belchamber

STA Committees

Two additional advisory committees are the Bicycle Advisory Committee (BAC) and the Paratransit Coordinating Council (PCC). The BAC is responsible for updating and monitoring the progress of the Solano Countywide Bicycle Plan and making bicycle project recommendations to the STA Board of Directors and staff.

The PCC works on countywide paratransit issues as required by the Metropolitan Transportation Commission (MTC) and makes recommendations on transit funding, claims and coordination.

STA Bicycle Advisory Committee...

Benicia	Austin Gibbon
Dixon	James Fisk
Fairfield	Scott Reynolds
Rio Vista	Vacant
Solano County	Randall Carlson
Suisun City	Mike Segala
Vacaville	Mike Posey

Vallejo

Member-at-Large

Robert Powell, Chair

Mick Weninger

STA Paratransit Coordinating Council ...

Solano County Health and
Social Services

Seniors

Social Service Provider

Education

Social Service Provider

Disabled

Social Service Provider

MTC

Abe Bautista, Chair

Ernest Bradford

Richard Broadus

Catarina Evanson

Marcia Kent

Fred Ramsey

Larry Schwahn

Jim Simon



Bicycle Advisory Committee

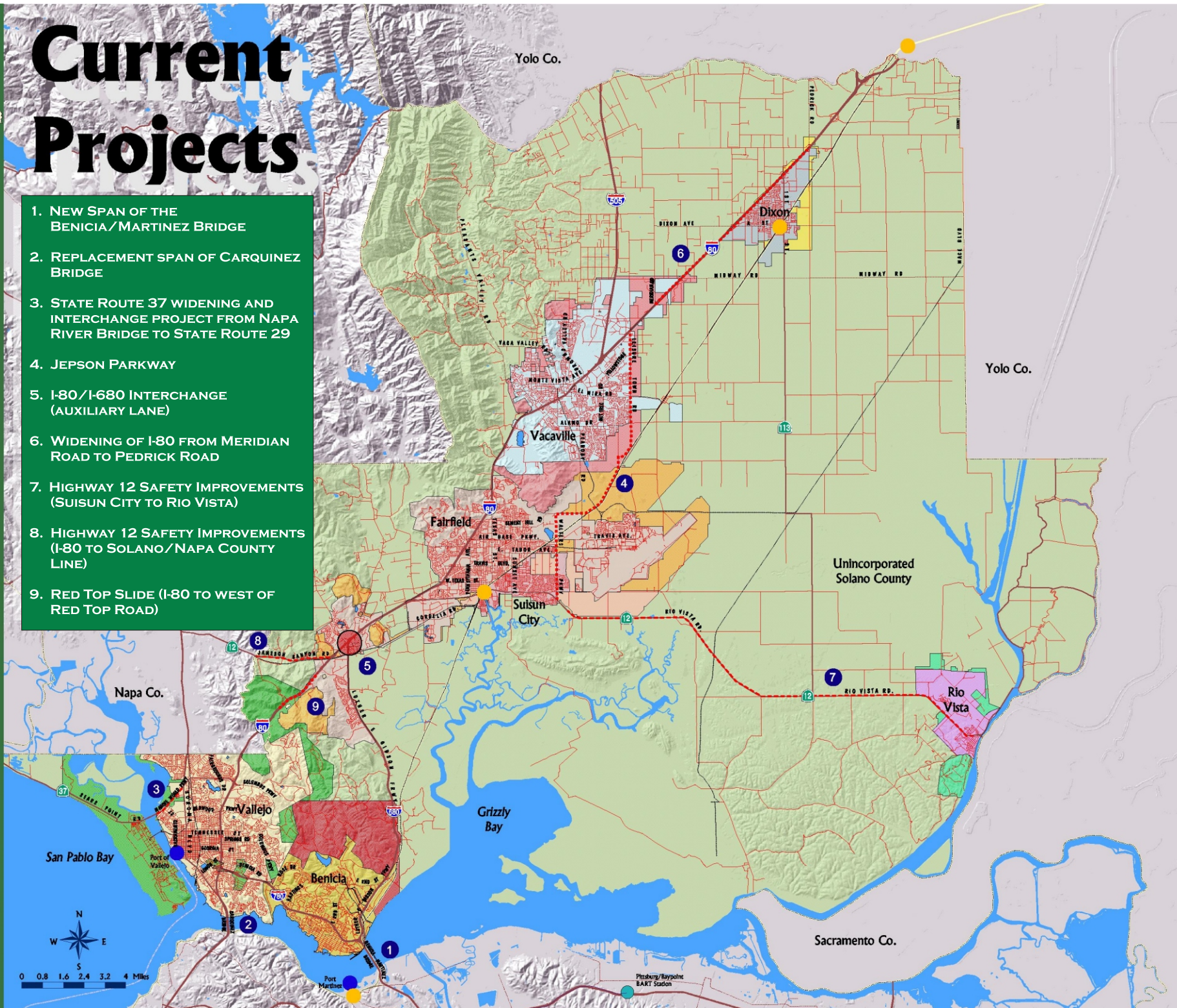


Paratransit Coordinating Council



Current Projects

1. NEW SPAN OF THE BENICIA/MARTINEZ BRIDGE
2. REPLACEMENT SPAN OF CARQUINEZ BRIDGE
3. STATE ROUTE 37 WIDENING AND INTERCHANGE PROJECT FROM NAPA RIVER BRIDGE TO STATE ROUTE 29
4. JEPSON PARKWAY
5. I-80/I-680 INTERCHANGE (AUXILIARY LANE)
6. WIDENING OF I-80 FROM MERIDIAN ROAD TO PEDRICK ROAD
7. HIGHWAY 12 SAFETY IMPROVEMENTS (SUISUN CITY TO RIO VISTA)
8. HIGHWAY 12 SAFETY IMPROVEMENTS (I-80 TO SOLANO/NAPA COUNTY LINE)
9. RED TOP SLIDE (I-80 TO WEST OF RED TOP ROAD)



Solano Comprehensive Transportation Plan

Planning for the Future...

With a growing population and increasing number of vehicles on Solano County's roads, planning for the future is a top priority for the STA. This year the STA embarked on a major planning process that will provide the vision and framework for Solano County's transportation decisions for the next 20 years. The plan will focus on funding availability, projected growth, traffic and transportation system impacts. The purpose of the planning process is to develop a countywide transportation vision, coordinate between different modes, establish short and long range priorities, and develop a funding plan for identified projects and programs.

Three subcommittees have been established to oversee the process: 1. Arterials, Highways and Freeways; 2. Transit (rail, ferry and bus); and 3. Alternative Modes (bikes, trails and rideshare).

A Steering Committee coordinates between modes and ensures public input is received. The process includes the development of preliminary needs assessments and prioritization of projects by local jurisdictions.

Presentations on the process were made to each of the



seven city councils and the Solano County Board of

Supervisors, and seven community



input meetings were held in the fall of 2000. The Countywide Bicycle Plan has been prepared and a Traffic Model was completed in 2000. The STA will continue to hold community input meetings throughout the entire process.

The scheduled completion of the Draft Solano Comprehensive Transportation Plan is February 2002 with final adoption by the STA Board in April 2002.

Highway, Arterial, Freeway Projects

New Benicia-Martinez Bridge...

The Benicia/Martinez Bridge expansion project is scheduled for completion in 2005. This major connection between Solano, Contra Costa County and other Bay



Area destinations will remove a primary bottleneck for



commuters. The STA continues to work in cooperation with the Metropolitan



Transportation Commission (MTC), Caltrans, the Contra Costa Transportation Authority and the

City of Benicia to address issues concerning the construction of the new northbound bridge span. A new 17 booth toll plaza will be constructed on the Contra Costa side and a new interchange at I-680/I-780 will be provided in Solano County. The new bridge will have five northbound lanes, four southbound lanes, a new

pedestrian and bicycle lane, and the capacity for future rail service. The project is currently under construction with a scheduled completion date of 2005. The estimated cost for this project is \$545 million and is funded by Regional Measure 1 that was passed by Bay Area voters in 1989.

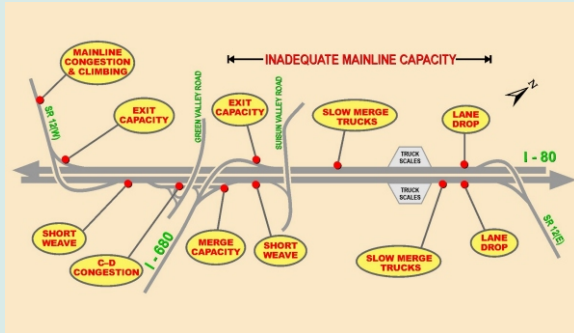
Carquinez Replacement Bridge...

Groundbreaking for the construction of the new westbound span and the demolition of the existing 1927 bridge was held in March 2000. The project includes seismic retrofit of the eastbound span that was constructed in 1958 ensuring both spans meet traffic safety standards and corrects roadway deficiencies. The new span will include three westbound lanes, one HOV lane and a pedestrian and bicycle lane. STA continues to work with Caltrans, MTC and the City of Vallejo to address local issues. The total cost for this project is estimated to be \$340 million and is also funded by Regional Measure 1 moneys. The project is scheduled for completion in 2004.

Highway, Arterials and Freeway Projects

I-80/I-680 Auxiliary Lane/Interchange/Corridor Study...

The impending completion of the new Benicia/Martinez and Carquinez Bridges created an urgency in accelerating the delivery of this project. The STA has designated the I-80/I-680 Interchange the



number one transportation project within Solano County.

Through the collective efforts of local and state elected officials, the total funding available for this project increased from \$8 million to \$38 million in 2000. The total cost of this interchange is expected to be greater than \$400 million and the STA is working with Caltrans and the Federal Highway Administration to plan construction in phases as funds become available.

I-80/I-680 Auxiliary Lane...

The Auxiliary Lane Project (Phase I) is the most immediate opportunity to provide temporary relief from the anticipated increase in congestion. The STA staff, Caltrans District 4 staff and project consultants are working on the proposed project designs that will connect the existing lanes to create a fifth through-lane in each direction on I-80. The project also expands the existing one lane connector ramp (to/from I-680 from/to I-80) to two lanes. The \$19 million project is fully funded and is scheduled to begin construction in 2002 with project completion in 2004 (prior to the completion of both bridges).

I-80/I-680 Interchange...

The STA was successful in obtaining an additional \$13 million in state funds to develop a concept plan for the full I-80/I-680 Interchange Complex.

In order to maintain an acceptable level of service at the I-80/I-680 Interchange, various alternative concepts

Highway, Arterials and Freeway Projects

I-80/I-680 Interchange/Corridor Study (cont)...

are being developed and analyzed by a project team consisting of STA, Caltrans, STA member agencies, and project consultants. Community input will be very important as alternatives are designed and considered.

I-80/I-680/I-780 Corridor Study...

In planning to meet transportation needs on a long-range basis, the STA Board of Directors authorized and initiated a I-80/I-680/I-780 Corridor Study to assess and prioritize key highway issues on the entire length of the corridor. The study will commence in the fall of 2001.

State Route 37/29 Interchange...



The State Route 37 Project represents a two decade-old Solano County priority project that was accelerated with

the closure of Mare Island. Because of the unique and special nature of this project and its proximity to

waterways, the White

Slough Specific Area Plan

has been prepared and was

approved by the Bay

Conservation and

Development Commission (BCDC) before permits could be issued.



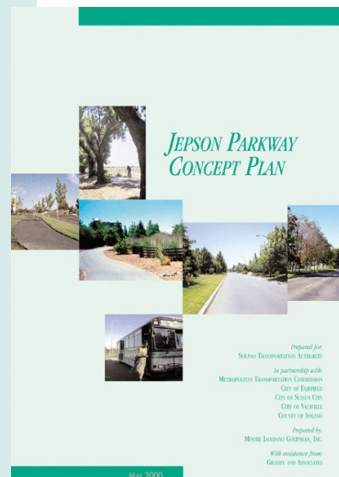
Phase I of this project will restore tidal wetlands at Guadalcanal Village and mitigate the loss of wetlands due to the proposed construction, Phase II and III will construct a four lane freeway in each direction from the Napa River Bridge to Diablo Street and a cloverleaf interchange at Highway 37/29. Mitigation and design work is underway. Total cost of this project is \$119 million and is fully funded. Project completion is scheduled for 2005.

Highway, Arterial Freeway Projects

Jepson Parkway Concept Plan...

In order to meet an ever growing commuting public, the Jepson Parkway Concept Plan was developed by the STA, the cities of Fairfield, Suisun City, Vacaville, and Solano County. The Concept Plan provides a comprehensive, innovative and coordinated strategy for developing a multi-modal corridor linking land use and transportation.

The multi-modal Parkway Project connects the I-80 Leisure Town Road interchange in Vacaville with Highway 12 in Suisun City. The four-lane parkway is designed to provide intra-county mobility for Solano County residents. The project links the existing road segments of Leisure Town, Vanden , Cement Hill and Walters Roads and includes three bridges, railroad separations, traffic signals and



improved intersections.

The STA's Jepson Parkway Concept Plan was the winner of the prestigious California

Transportation Foundation "TRANNY" Award for 2000 in the category of Excellence in Transportation Management.

The STA Board adopted the plan in April of 2000 and a National Environmental Protection Act (NEPA) 404 process was initiated in partnership with Caltrans, the Federal Highway Administration (FHWA), the four local agencies and various federal, state and regional resource agencies. The full Environmental Impact Study Report is scheduled to begin in the summer of 2001. The completion of the entire project is expected by 2007/2008 with several segments to be completed



Highway, Arterial Freeway Projects

Highway 12 Major Investment Study...



Highway 12 is an important east-west route that connects Solano County to Napa and Sonoma counties in the west and I-80 to Rio Vista

to the east. The Highway 12 Major Investment Study is evaluating the near and long-term improvements needed on the segment of the route from I-80 to the Sacramento River. The study is funded by a state planning grant, and will identify transportation deficiencies and develop appropriate phased remedies. Identified improvements will address existing travel safety problems and work to eliminate any hazards. The study will also identify the environmental constraints that exist in the corridor.

The Project Team has worked proactively to involve

all interested parties in the process of developing the MIS documents. The study is scheduled to be completed in June 2001.

The STA continues to work with Caltrans to program over \$30 million of State Highway Operational Protection Program (SHOPP) funding to correct safety and operational issues on Highway 12 from Suisun City to Rio Vista.

Highway 12 - Jamison Canyon...

This year the STA successfully joined with the Napa County Transportation Planning Agency (NCTPA) to lobby for \$7 million in state funds to complete environmental and design work for the realignment and widening of that Highway 12 between I-80 in Solano County and Highway 29 in Napa County.

Transit (bus, ferry, rail) Projects

Capitol Corridor Rail...

Since the Capitol Corridor Joint Powers Authority was formed in 1998, the STA has been an active member in the planning of current and future intercity rail service. The Capitol Corridor Rail service operates daily between Sacramento, Oakland and San Jose and has become a viable intercity commute alternative for business and recreational travelers. The Suisun City station ridership has increased by 76% with a systemwide increase of 54.2% . To prepare for the anticipated growth in ridership, the STA Board of Directors initiated the station designs for proposed stations in Benicia, Dixon and Fairfield/Vacaville.

The Capitols obtained state operating funds to add a 8th and 9th daily train to the system beginning in 2001. The STA is supporting state funding for three specific operational improvements needed to improve and expand service in Solano County.

The STA has provided funds to double the available parking at the Suisun City Station.



Transit (bus, ferry, rail) Projects

Vallejo Baylink Ferry...

In 2000, the STA began actively supporting the greatly successful and popular Vallejo Baylink Ferry service. The STA's collaboration with Vallejo helped



provide \$10 million in state and regional

funds for a third fast ferry boat. The system has consistently averaged over 50% farebox recovery since 1992 and in 1999/2000 recorded a cost recovery rate of 75%.



The STA Board traveled to Washington DC in March 2000 which resulted in \$830,000 in federal funds

for the Baylink Ferry. The addition of the new third ferry is projected to increase the annual patronage by 500,000 in 2003.

An additional \$10.8 million has been secured for the planned Vallejo Intermodal Station that will provide 1,400 off street parking spaces, upgrades to local and regional bus transfer facilities, bicycle facilities and pedestrian connections between downtown and the

Vallejo Ferry Terminal. In 2000, the STA contributed \$2.5 million to this project and an additional \$500,000 for the proposed Ferry Maintenance Facility on Mare Island.

Solano Bikeway Plan Implementation...

The Solano Bikeway Project in Vallejo is fully funded and slated for construction in 2001.

STA Board members and staff participated in the groundbreaking ceremonies in



October. The STA provided over \$2 million to the project that will provide a bicycle connection between Vallejo and Fairfield along I-80. The Davis to Dixon Phase 3 bicycle project has been completed and an additional segment of the Alamo Creek/Southside Bikeway segments has been completed in Vacaville. The Central County Bikeway along Highway 12 in Suisun City is totally funded and design is underway.

A newly designed Bike Route sign will be appearing in 2001 on primary bike routes throughout the county.



Other Projects/Priorities...

Red Top Slide/McGary Road

- Subcommittee formed to monitor mitigation effort
- 2000 SHOPP funding obtained
- Phase I improvements underway to stabilize slide area

Park and Ride Lots

- Funding provided for
 - Fairfield Transportation Center Phase 2
 - Vacaville Bella Vista Park and Ride Lot
 - Vallejo Intermodal Center
- Completed Park and Ride Survey

SolanoLinks Transit Coordination

- Transit policy for enhanced coordination developed
- Route 30 transferred to Fairfield/Suisun Transit
- Transit Working Groups formed to address short term issues
- Seven short-term transit priorities identified
- Transit Element of Comprehensive Plan initiated

Alternative Modes

Solano Commuter Information...

On July 1, 2000, the Solano Commuter Information (SCI) Program was transitioned to the STA. As part of MTC's Regional Rideshare Program, the successful SCI program has provided rideshare information and services to Solano county residents for over 20 years and to Napa residents since 1998.

Solano County commuters have the longest average commutes and the highest percentage of car/vanpooling in the Bay Area. The SCI program provides not only carpool and vanpool matching and support services, but also comprehensive transportation information. SCI works closely with transit operators to provide up-to-date local and regional bus, rail, and ferry information for commute and non-commute trips. Bicycling, rideshare incentives,



park and ride lot information and more are available by calling SCI at (800) 53-KMUTE.

Throughout the year, the program promotes the use of alternative transportation to individuals and organizations. One avenue to accomplishing this is by working with Solano and Napa employers and others in the business community. Other methods include coordinating countywide promotional campaigns for California Rideshare Week and California Bike to Work Day and partnering with other agencies. Each year SCI is at dozens of community events such as farmers' markets, concerts and business expos. STA's SCI program strives to deliver comprehensive, alternative transportation information to every level of the community in Solano and Napa counties.



The STA currently employs twelve full time and one part time administrative, project, and planning staff. The staff

implements the policies of the STA Board and manages multiple consultant contracts, finances projects, and acts as the liaison with local project sponsors and regional, state and federal agencies.

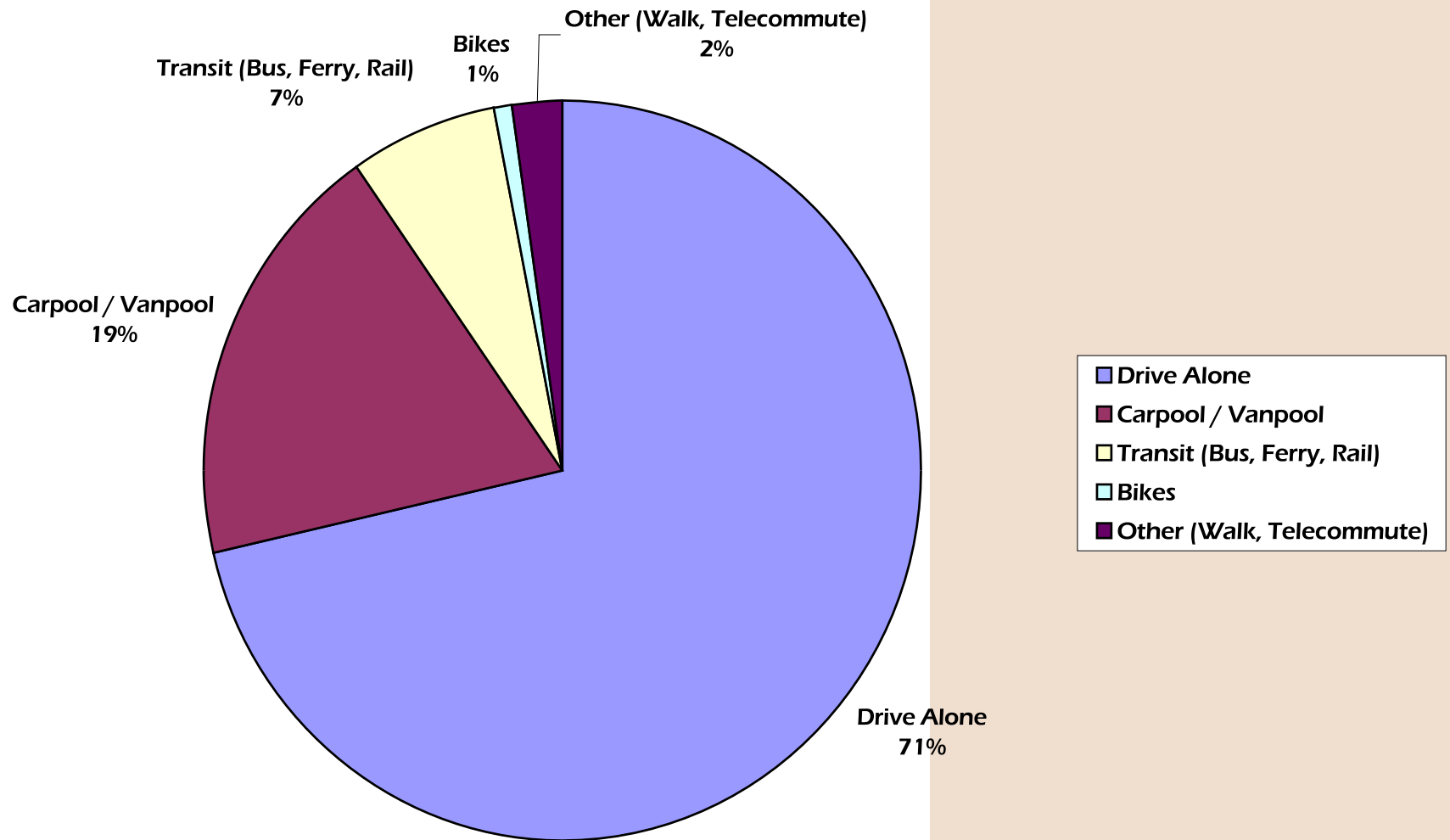
STA's SCI program provides ridesharing information and services to Solano and Napa County commuters who travel to jobs throughout the Bay Area and Sacramento.

STA Staff

Daryl Halls	Executive Director
Dan Christians	Deputy Director/Planning
John Harris	Deputy Director/Projects
Elizabeth Richards	SCI Program Director
Stacy Medley	Office Manager/Clerk of the Board
Janice Sells	Program Manager/Analyst
Sandy Catalano	SCI Program Analyst
Karin Hiole	SCI Outreach Coordinator
Barbara Padilla	SCI Commute Consultant
Theresa Cammarota	SCI Commute Consultant
Kim Cassidy	Administrative Assistant
Robert Guerrero	Planning Assistant
Jennifer Tongson	Project Intern

Commuting in Solano County

Commute Modes in Solano County by Percentage



Distribution of Federal, State, and Grant Funds by Mode (1998-2000)

Highway Expansion Projects include:

- I-80/680 Interchange
- Jepson Parkway Project
- Highway 37 Improvements Project
- SR 12 Widening to Napa
- I-80 Widening (from Vacaville to Dixon)

Highway Safety and Maintenance Projects include:

- I-80/680 Auxiliary Lanes
- Red Top Slide Project

Local Projects include:

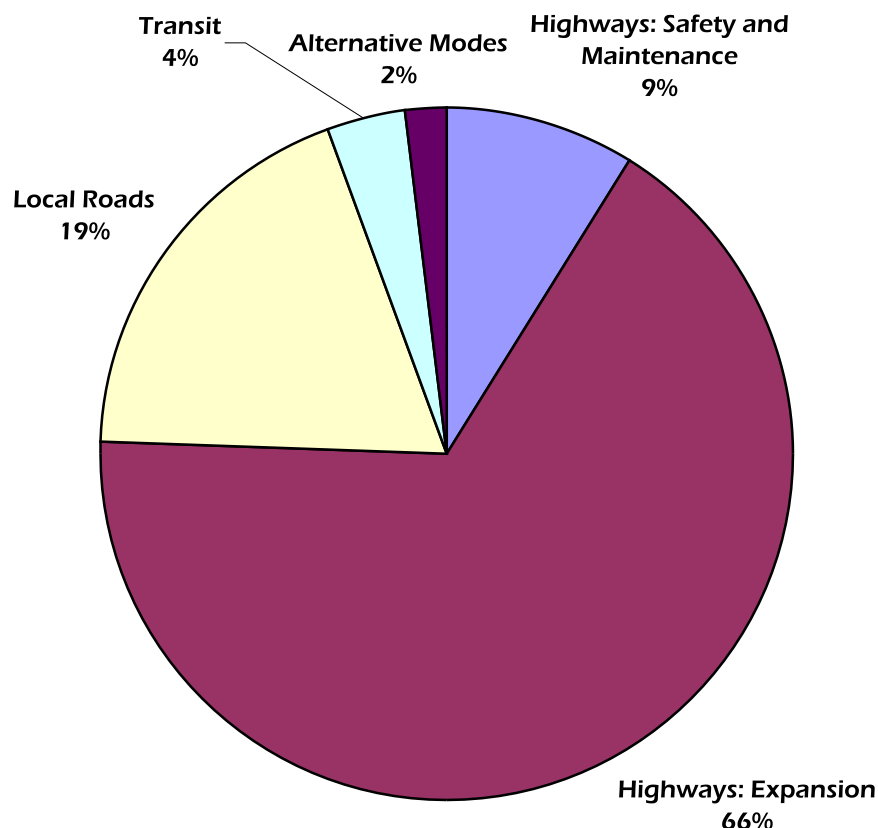
- Rehabilitation / Overlay projects
- Street improvements
- Street reconstruction
- Traffic signals / Intersection improvements

Transit Projects include:

- Bus Purchases / Rehabilitation
- Paratransit vehicles and services
- Ferry Purchases / Rehabilitation
- Rehabilitation of Bus and Ferry facilities
- Construction of Park-and-Ride Lots
- Intermodal Centers

Alternative Mode Projects include:

- Construction of bicycle lanes
- Bicycle enhancements such as lockers and striping lines
- Electric vehicle stations
- CNG fueling facilities
- Rideshare / Vanpool Program



For More Information

Solano Transportation Authority

Phone: 707.422.6491

FAX: 707.438.0656

e-mail: staplan@hotmail.com

Web: www.solanolinks.com

STA's Solano Commuter Information

Phone: 800.53KMUTE

FAX: 707.432.1947

e-mail: kmute800@jccomp.com