

Highways 37 and 121 Intersection Update SR-37 Policy Committee January 4, 2018

Dan McElhinney, P.E.
Chief Deputy District Director
District 4 Bay Area
510-220-0738



SR 37/121: Existing Traffic Conditions

Eastbound/Afternoon Peak Congestion



Drive Time: 20 Min Free Flow

100 Min in Congestion



Peak Period: 7 Hours



Maximum Delay: 80 Min



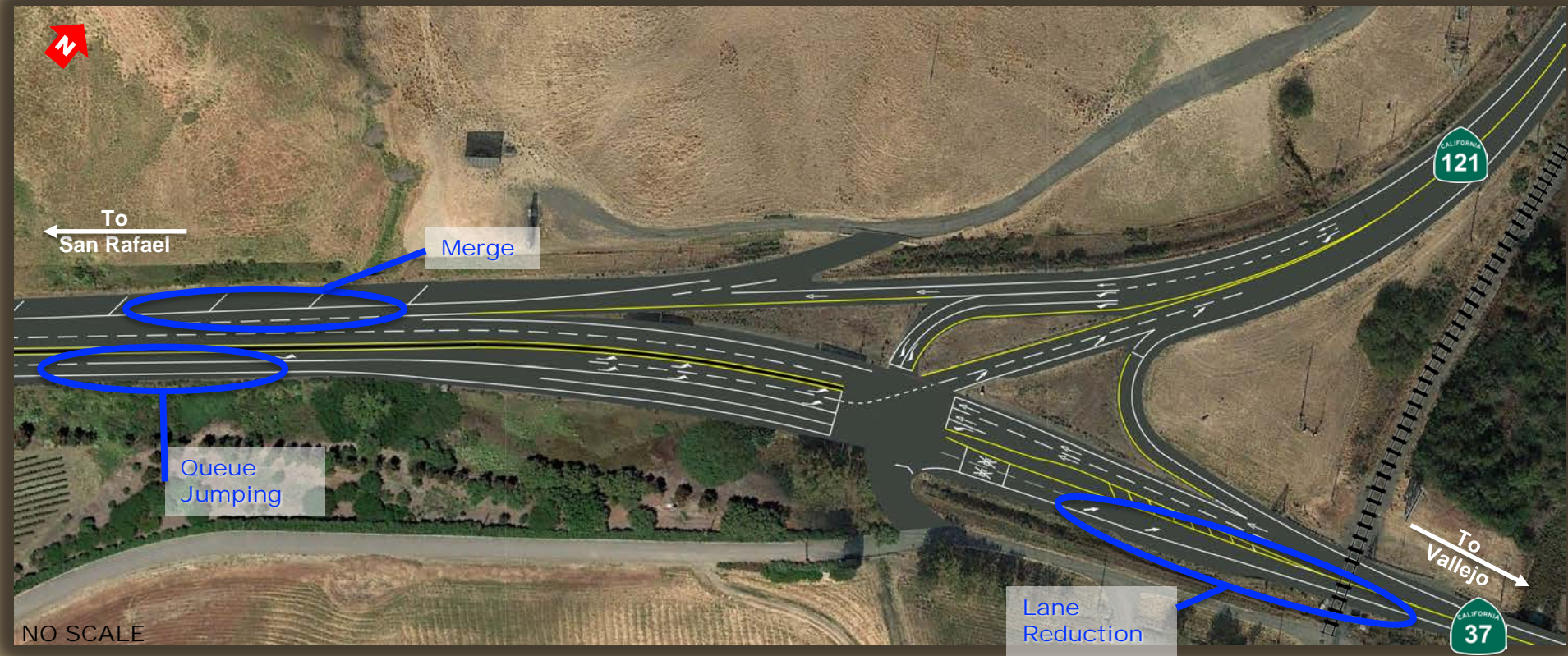
Maximum Queue: 5 Miles



**Accidents: 90% are
Congestion Related**

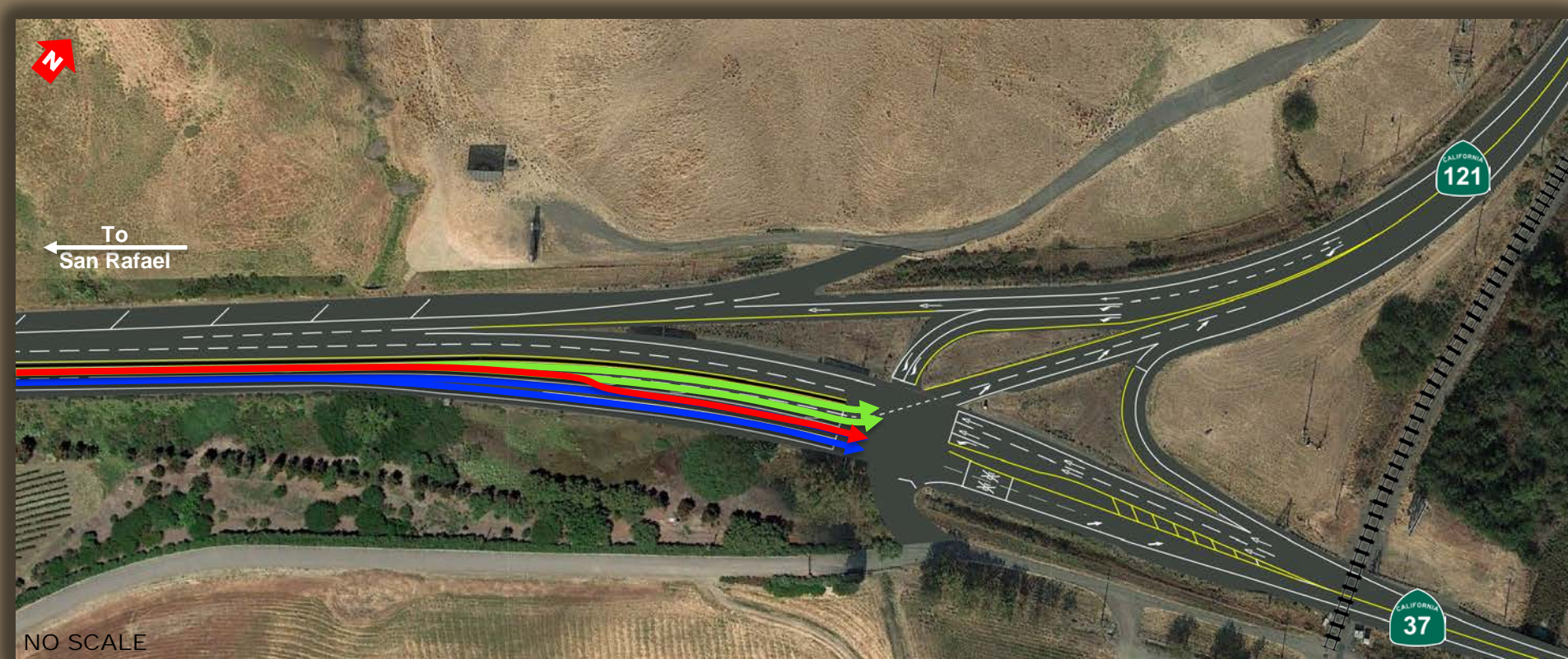


SR 37/121 Intersection: Existing Bottlenecks



Eastbound SR 37: Existing Conditions

With Lane #1 between Lakeville Road and SR 121 designated for travel to Napa via 121 North - "Queue jumping" occurs frequently



Existing

EB SR 37: Proposed Restriping Avoid Queue Jumping



After Striping/Signing Improvement



EB SR-37 : Proposed Restriping from Lakeville Road to 121



A yellow diamond-shaped sign with a black border. The text "LEFT LANE TURNS LEFT AHEAD" is written in black, bold, sans-serif capital letters, centered on the sign.



Southbound SR 121 Approach

xx(yy)

AM(PM) Peak Hour Volume (Heavy Right Turn Demand)



Signal Operations Optimized in Summer 2017



Sufficient Storage Length & 34 to 54 seconds green for Left-turns



Action Needed: Improve Merge on WB SR-37



Westbound SR-37 : Existing Conditions

High Merging Volumes on Westbound SR-37
Impede Right Lane Movement on Southbound SR-121

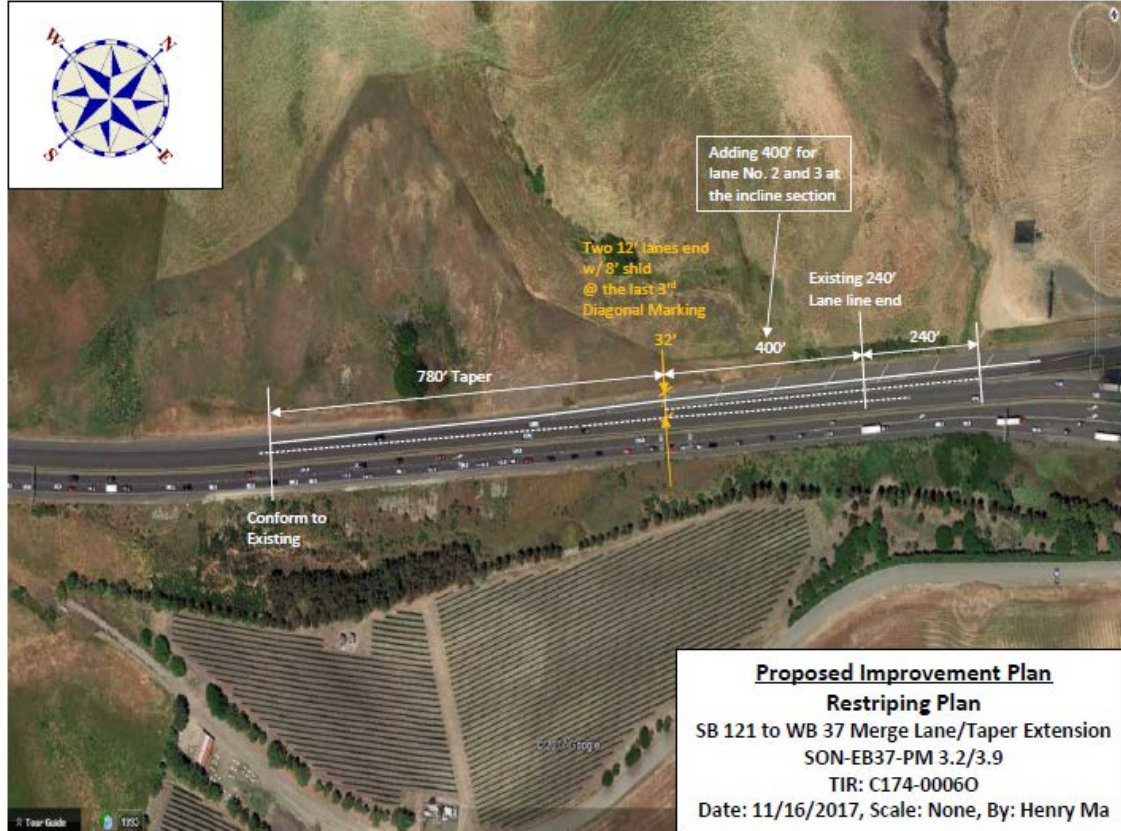


SR 37/121: Short-Term Improvements





SR 37/121: Short-Term Improvements



SR 37/121: Proposed Restriping Improving Westbound Merge



SR 37/121

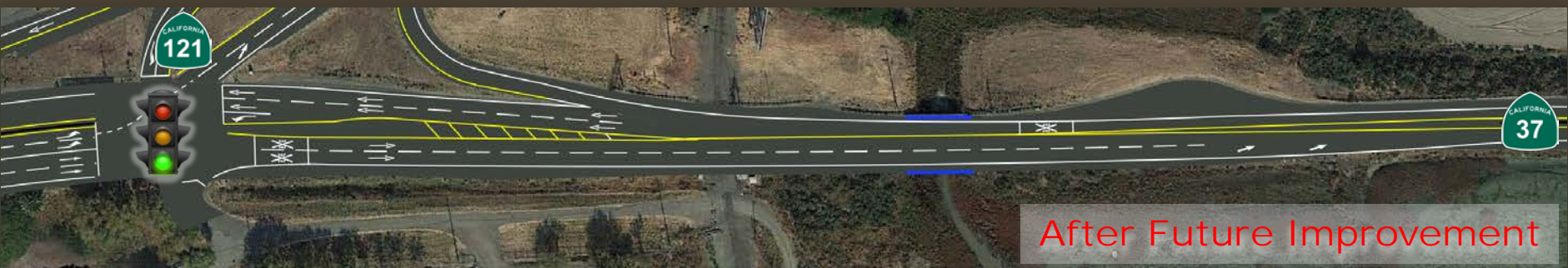
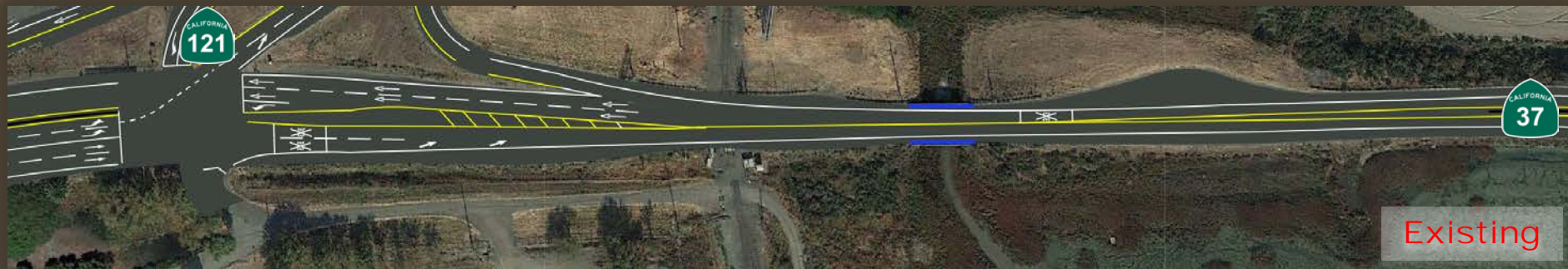
Complete Striping & Signing/ Signal Timing Optimization

Schedule: Winter 2018



SR-37 & SR-121: Future Improvement Study: Extend Lane Merge at RR Crossing





SR-37 & Lakeville Road: Future Improvement

Study: Extend Left Turn Bay

Existing



After Future Improvement



Questions?

Dan McElhinney, P.E.
Chief Deputy District Director
District 4 Bay Area
510-220-0738

